

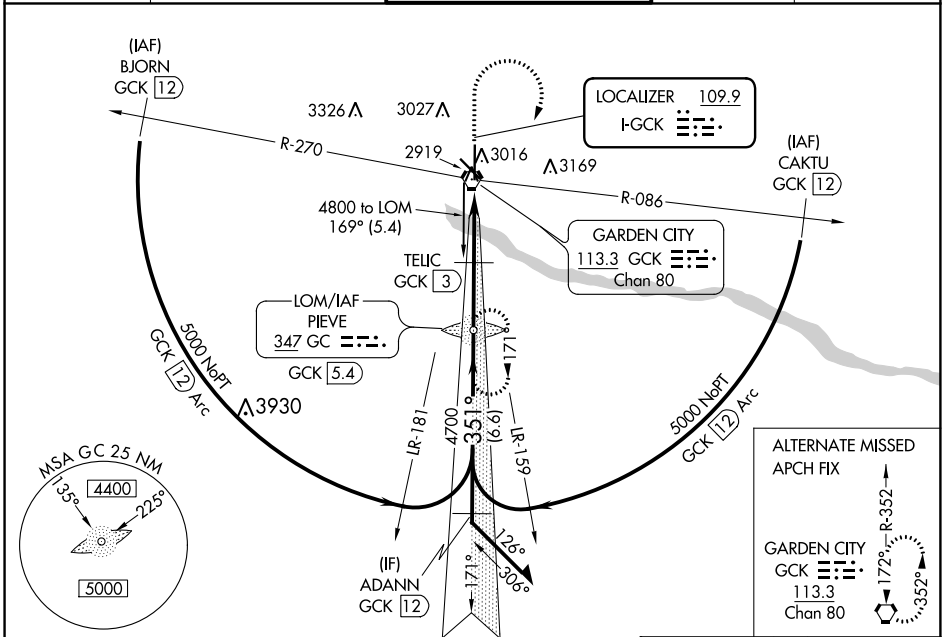
LOC I-GCK 109.9	APP CRS 351°	Rwy Idg 7299	TDZE 2885
		Apt Elev 2891	

ILS or LOC RWY 35

GARDEN CITY RGNL (GCK)

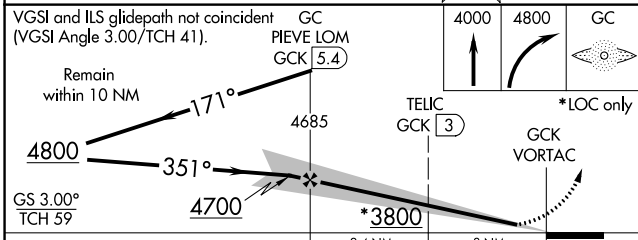
ADF required.	MALSR 	MISSED APPROACH: Climb to 4000 then climbing right turn to 4800 direct PIEVE LOM/GCK 5.4 DME and hold.
For inop ALS, increase TELIC fix minimums S-LOC 35		
Cat C/D visibility to 7/8 SM.		

ASOS 121.325	KANSAS CITY CENTER 125.2 269.4	GARDEN CITY TOWER* 118.15 (CTAF) 0 254.4	GND CON 119.0 254.4	UNICOM 122.95
------------------------	--	--	-------------------------------	-------------------------



NC-2, 30 DEC 2021 to 27 JAN 2022

NC-2, 30 DEC 2021 to 27 JAN 2022



CATEGORY	A	B	C	D
S-ILS 35	3085-1/2 200 (200-1/2)			
S-LOC 35	3800-3/4	915 (1000-3/4)	3800-2	915 (1000-2)
CIRCLING	3800-1 1/4	909 (1000-1 1/4)	3800-2 3/4	3800-3
TELIC MINIMUMS (DME REQUIRED)				
S-LOC-35	3180-1/2 295 (300-1/2)			
CIRCLING	3320-1 429 (500-1)	3360-1 469 (500-1)	3480-1 1/2 589 (600-1 1/2)	3480-2 589 (600-2)

