

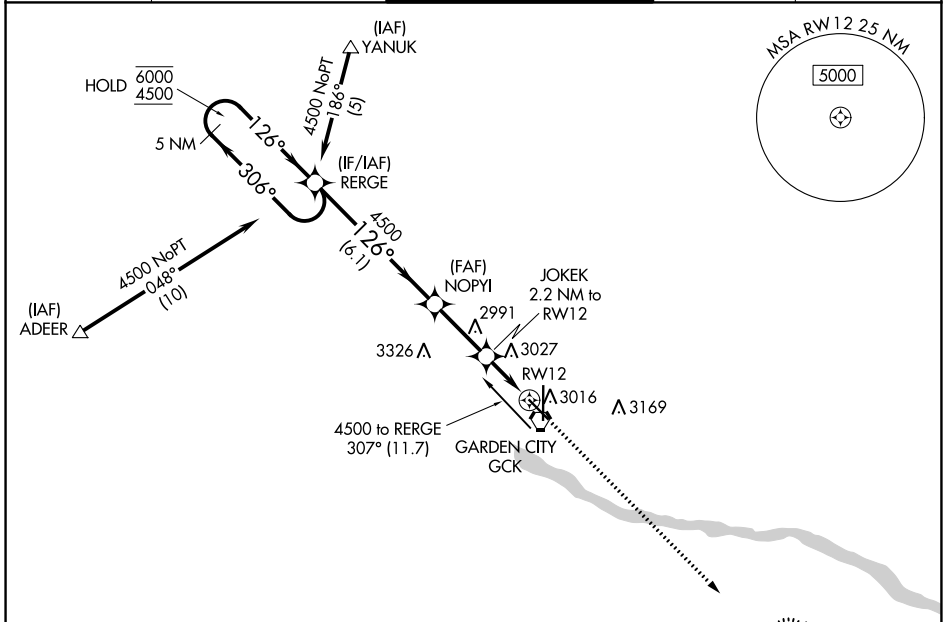
WAAS CH 77803 W12A	APP CRS 126°	Rwy Idg TDZE Apt Elev	5700 2891 2891
--	------------------------	-----------------------------	---

RNAV (GPS) RWY 12

GARDEN CITY RGNL (GCK)

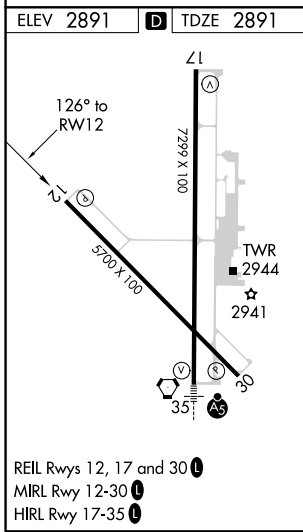
RNP APCH.	MISSED APPROACH: Climb to 4600 direct ORECA and hold.
<p>▼ For uncompensated Baro-VNAV systems, procedure NA below -20°C or above 43°C.</p> <p>▲</p>	

ASOS 121.325	KANSAS CITY CENTER 125.2 269.4	GARDEN CITY TOWER* 118.15 (CTAF) 0 254.4	GND CON 119.0 254.4	UNICOM 122.95
------------------------	--	--	-------------------------------	-------------------------



NC-2, 30 DEC 2021 to 27 JAN 2022

NC-2, 30 DEC 2021 to 27 JAN 2022



	5 NM Holding Pattern	REGE	NOPI	JOKEK 2.2 NM to RW12	4600 ORECA
	6000 ← 306°	126° →	126° →	*1.1 NM to RW12	*LNAV only
	4500	4500	*3620	RW12	
	GP 3.00°				
	TCH 47				
		6.1 NM	2.6 NM	1.1 NM	1.1 NM
CATEGORY	A	B	C	D	
LPV DA	3141-1 250 (300-1)				
LNAV/VNAV DA	3184-1 293 (300-1)				
LNAV MDA	3280-1	389 (400-1)	3280-1½ 389 (400-1½)	3280-1¼ 389 (400-1¼)	
C CIRCLING	3320-1 429 (500-1)	3360-1 469 (500-1)	3480-1½ 589 (600-1½)	3480-2 589 (600-2)	