

VORTAC GCK 113.3 Chan 80	APP CRS 173°	Rwy Idg 7299 TDZE 2889 Apt Elev 2891
--	------------------------	---

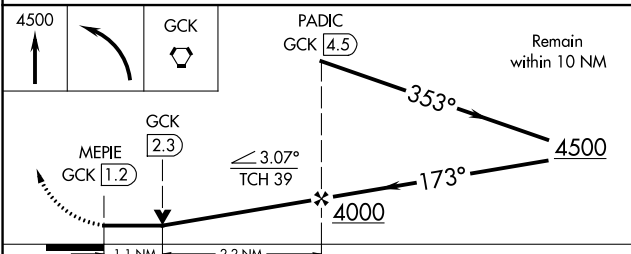
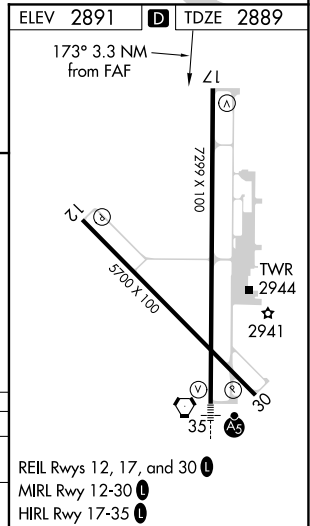
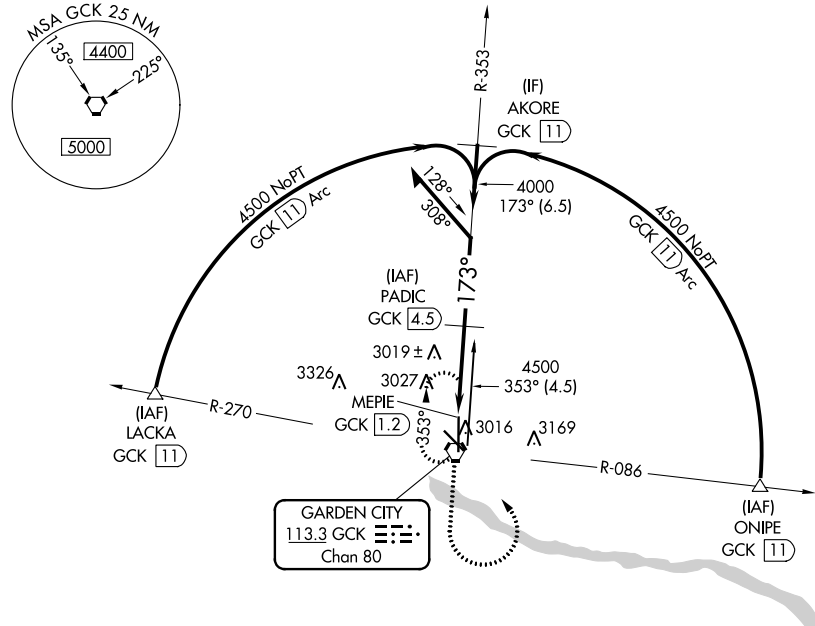
VOR/DME RWY 17

GARDEN CITY RGNL (GCK)

⚠ When local altimeter setting not received, use Dodge City Rgnl altimeter setting and increase all MDA 140 feet and Circling Cat C visibility ½ SM and Circling Cat D visibility ¼ SM.
⚠ VDP NA when using Dodge City altimeter setting.

MISSED APPROACH:
Climb to 4500, then left turn direct GCK VORTAC and hold.

ASOS 121.325	KANSAS CITY CENTER 125.2 269.4	GARDEN CITY TOWER ★ 118.15 (CTAF) 0 254.4	GND CON 119.0 254.4	UNICOM 122.95
------------------------	--	---	-------------------------------	-------------------------



CATEGORY	A	B	C	D
S-17		3280-1 391 (400-1)		3280-1¼ 391 (400-1¼)
C CIRCLING	3320-1 429 (500-1)	3360-1 469 (500-1)	3480-1½ 589 (600-1½)	3480-2 589 (600-2)

REIL Rwy 12, 17, and 30 **Ⓛ**
 MIRL Rwy 12-30 **Ⓛ**
 HIRL Rwy 17-35 **Ⓛ**

NC-2, 30 DEC 2021 to 27 JAN 2022

NC-2, 30 DEC 2021 to 27 JAN 2022