

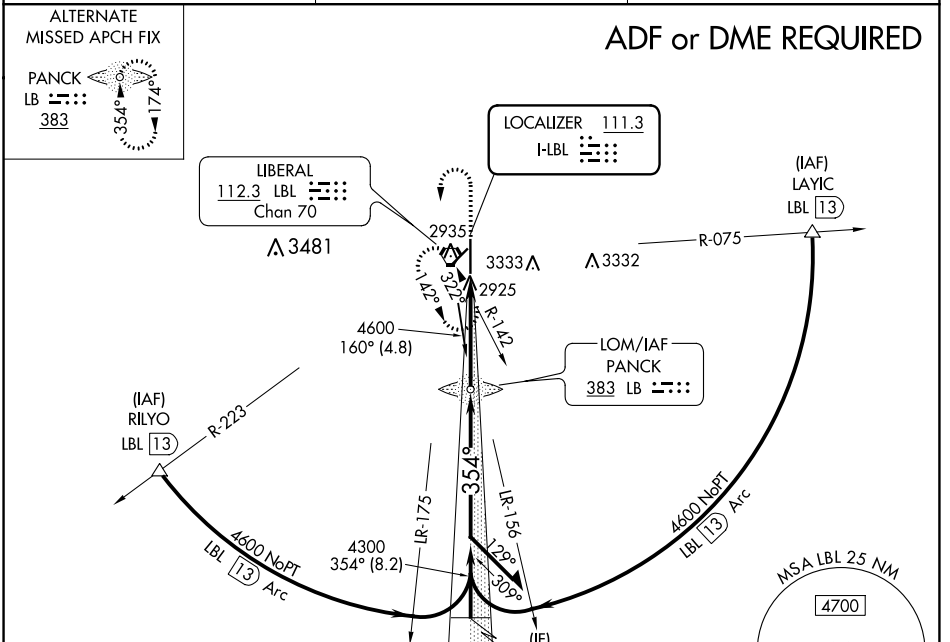
LOC I-LBL <b>111.3</b>	APP CRS <b>354°</b>	Rwy Idg TDZE Apt Elev	<b>7101</b> <b>2875</b> <b>2886</b>
---------------------------	------------------------	-----------------------------	---

**ILS or LOC RWY 35**  
LIBERAL MID-AMERICA RGNL (L.B.L.)

**⚠** Circling NA east of Rwy 17-35. When local altimeter setting not received, use Guymon Muni altimeter setting: Increase all DA 112 feet and all MDA 120 feet. Increase S-LOC Cats C and D visibility 3/8 mile; Circling Cat D visibility 1/4 mile.

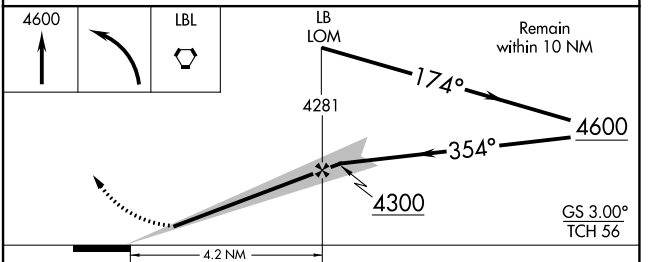
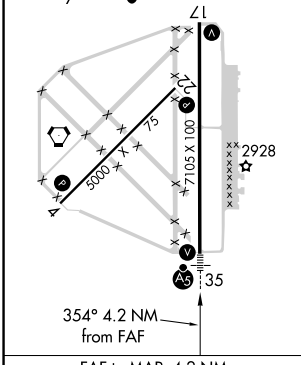
**MALSRL** MISSED APPROACH: Climb to 4600 then left turn direct LBL VORTAC and hold.

AWOS-3PT <b>118.375</b>	KANSAS CITY CENTER <b>134.0 257.865</b>	UNICOM <b>122.8 (CTAF)</b>
----------------------------	--	-------------------------------



ELEV 2886	<b>D</b>	TDZE 2875
-----------	----------	-----------

REIL Rws 4, 17 and 22  
MIRL Rwy 4-22  
HIRL Rwy 17-35



CATEGORY	A	B	C	D
S-ILS 35	3075-1/2		200 (200-1/2)	
S-LOC 35	3260-1/2	385 (400-1/2)	3260-5/8	385 (400-5/8)
<b>C</b> CIRCLING	3260-1 374 (400-1)	3340-1 454 (500-1)	3340-1 1/2 454 (500-1 1/2)	3440-2 554 (600-2)

NC-2, 30 DEC 2021 to 27 JAN 2022

NC-2, 30 DEC 2021 to 27 JAN 2022