

| | | | |
|--|------------------------|-----------------------------|---|
| WAAS CH 63005 W35A | APP CRS 354° | Rwy Idg TDZE Apt Elev | 7101 2875 2886 |
|--|------------------------|-----------------------------|---|

RNAV (GPS) RWY 35

LIBERAL MID-AMERICA RGNL (L.B.L.)

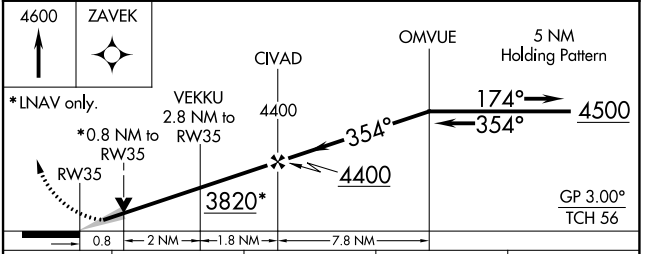
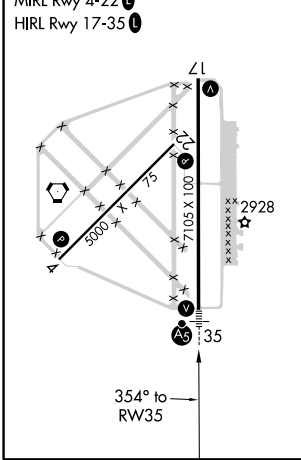
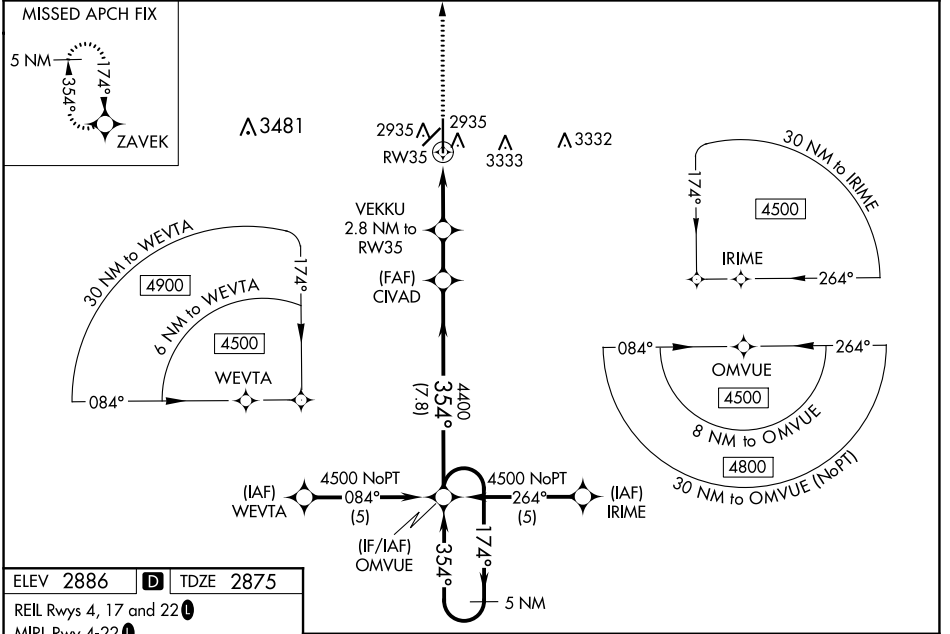
⚠ Baro-VNAV NA when using Guymon Muni altimeter setting. For uncompensated Baro-VNAV systems, LNAV/VNAV NA below -20°C (-4°F) or above 52°C (125°F). Circling NA east of Rwy 17-35. DME/DME RNP-0.3 NA. VDP NA when using Guymon Muni altimeter setting. When local altimeter setting not received, use Guymon Muni altimeter setting: Increase all DA 112 feet and all MDA 120 feet, increase LNAV Cats C and D visibility 3/8 mile; Circling Cat D visibility 1/4 mile.

MALSR



MISSED APPROACH: Climb to 4600 direct ZAVEK and hold.

| | | |
|-----------------------------------|---|--|
| AWOS-3PT 118.375 | KANSAS CITY CENTER 134.0 257.865 | UNICOM 122.8 (CTAF) 0 |
|-----------------------------------|---|--|



| CATEGORY | A | B | C | D |
|-------------------|-----------------------|-----------------------|-------------------------------|-----------------------|
| LPV DA | | 3075-1/2 | 200 (200-1/2) | |
| LNAV/VNAV DA | | 3125-1/2 | 250 (300-1/2) | |
| LNAV MDA | | 3200-1/2 | 325 (400-1/2) | |
| C CIRCLING | 3260-1 374 (400-1) | 3340-1 454 (500-1) | 3340-1 1/2 454 (500-1 1/2) | 3440-2 554 (600-2) |

NC-2, 30 DEC 2021 to 27 JAN 2022

NC-2, 30 DEC 2021 to 27 JAN 2022