

WAAS CH 72905 W04A	APP CRS 039°	Rwy Idg TDZE Apt Elev	5000 2886 2886
--	------------------------	-----------------------------	---

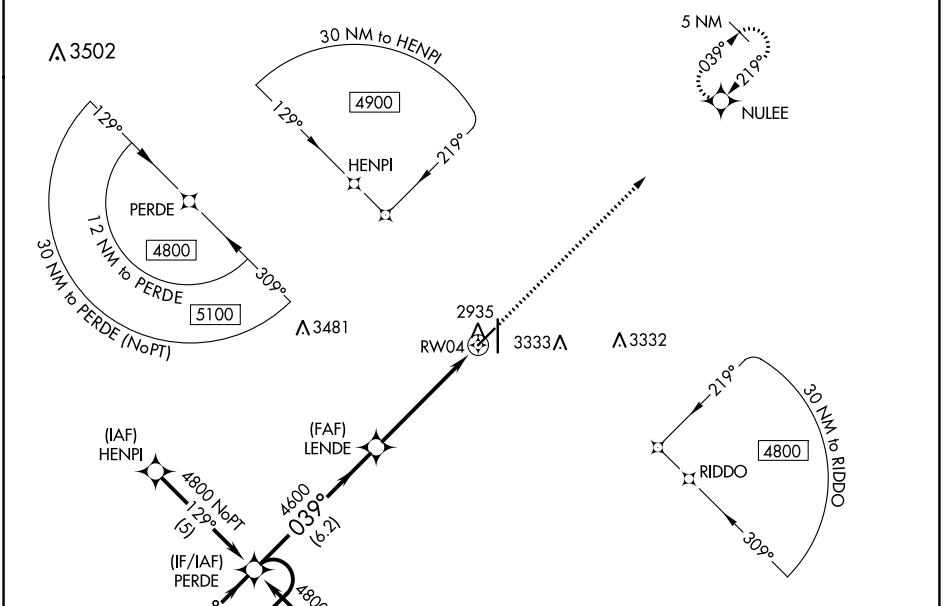
RNAV (GPS) RWY 4

LIBERAL MID-AMERICA RGNL (L.B.L.)

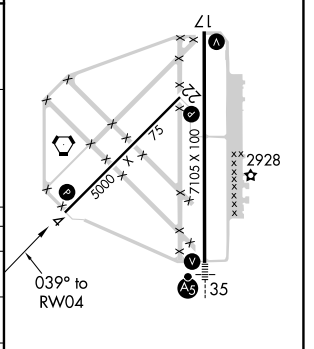
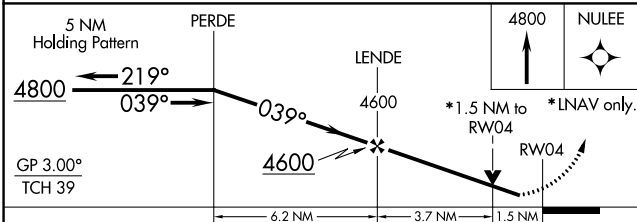
⚠ For uncompensated Baro-VNAV systems, LNAV/VNAV NA below -20°C (-4°F) or above 54°C (130°F). Circling NA east of Rwy 17-35. DME/DME RNP-0.3 NA. When local altimeter setting not received, use Guymon Muni altimeter setting: increase all DA 112 feet and all MDA 120 feet; increase all visibilities 3/8 mile. Baro-VNAV NA when using Guymon Muni altimeter setting. VDP NA when using Guymon Muni altimeter setting. Helicopter visibility reduction below 3/4 SM NA.

MISSED APPROACH: Climb to 4800 direct NULEE and hold.

AWOS-3PT 118.375	KANSAS CITY CENTER 134.0 257.865	UNICOM 122.8 (CTAF)
----------------------------	--	-------------------------------



ELEV 2886	D TDZE 2886
-----------	--------------------



CATEGORY	A	B	C	D
LPV DA		3136-7/8	250 (300-7/8)	
LNAV/VNAV DA		3300-13/8	414 (500-13/8)	
LNAV MDA	3400-1	514 (600-1)	3400-13/8	514 (600-13/8)
C CIRCLING	3400-1	514 (600-1)	3400-1 1/2	3440-2
			514 (600-1 1/2)	554 (600-2)

REIL Rws 4, 17 and 22 **L**
MIRL Rwy 4-22 **L**
HIRL Rwy 17-35 **L**

NC-2, 30 DEC 2021 to 27 JAN 2022

NC-2, 30 DEC 2021 to 27 JAN 2022