

VORTAC LBL <b>112.3</b> Chan <b>70</b>	APP CRS <b>019°</b>	Rwy Idg TDZE Apt Elev <b>5000</b> <b>2885</b> <b>2886</b>
--	------------------------	--

# VOR RWY 4

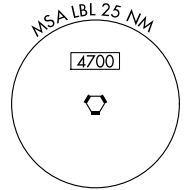
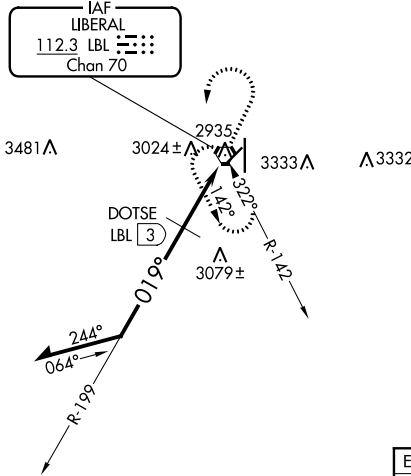
LIBERAL MID-AMERICA RGNL (L.B.L)

**⚠** Circling NA east of Rwy 17-35. When local altimeter setting not received, use Guymon altimeter setting and increase all MDA 120 feet, increase Circling Cat D visibility ¼ SM. Visibility reduction by helicopters NA. VDP NA when using Guymon Muni altimeter setting.

**MISSED APPROACH:** Climb to 4000 then climbing left turn to 4600 direct LBL VORTAC and hold.

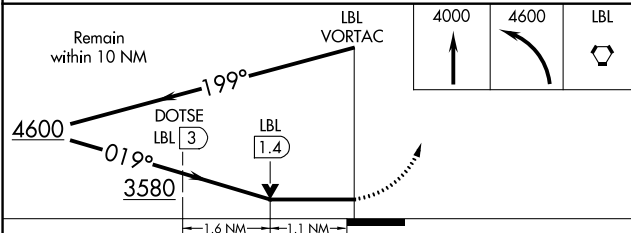
AWOS-3PT <b>118.375</b>	KANSAS CITY CENTER <b>134.0 257.865</b>	UNICOM <b>122.8 (CTAF) 0</b>
----------------------------	--	---------------------------------

A 3502



NC-2, 30 DEC 2021 to 27 JAN 2022

NC-2, 30 DEC 2021 to 27 JAN 2022



CATEGORY	A	B	C	D
S-4	3580-1 695 (700-1)		3580-2 695 (700-2)	3580-2¼ 695 (700-2¼)
<b>C</b> CIRCLING	3580-1 694 (700-1)		3580-2 694 (700-2)	3580-2¼ 694 (700-2¼)
<b>DME MINIMUMS</b>				
S-4	3280-1 395 (400-1)			3280-1¼ 395 (400-1¼)
<b>C</b> CIRCLING	3340-1 454 (500-1)		3340-1½ 454 (500-1½)	3440-2 554 (600-2)

