

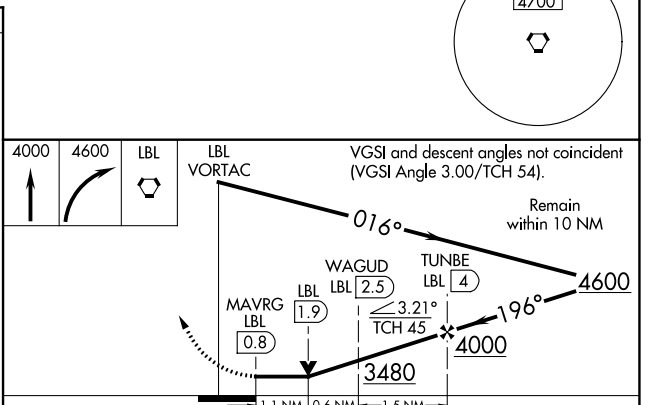
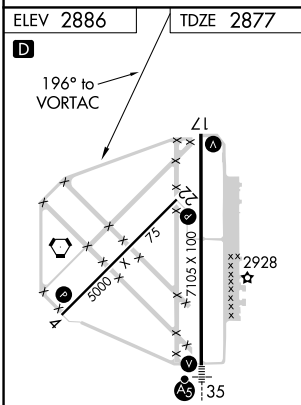
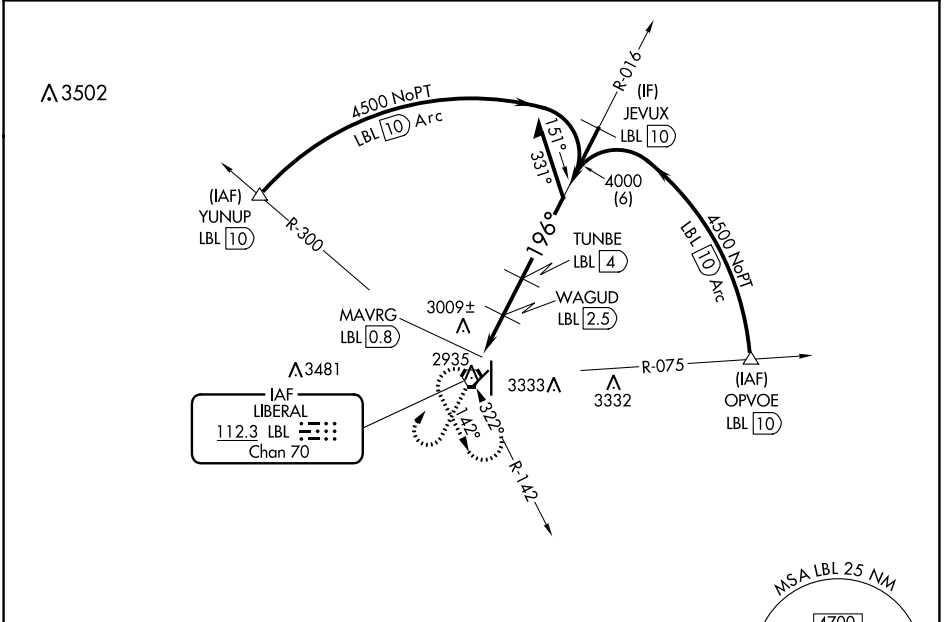
VORTAC LBL <b>112.3</b> Chan <b>70</b>	APP CRS <b>196°</b>	Rwy Idg TDZE Apt Elev <b>7101</b> <b>2877</b> <b>2886</b>
--	------------------------	--

**VOR/DME RWY 17**  
LIBERAL MID-AMERICA RGNL (L.B.L.)

**⚠** Circling NA east of Rwy 17-35. When local altimeter setting not received, use Guymon altimeter setting and increase all MDA 120 feet, increase Circling Cat D visibility ¼ SM. Visibility reduction by helicopters NA. VDP NA when using Guymon Muni altimeter setting.

**⚠** MISSED APPROACH: Climb to 4000 then climbing right turn to 4600 direct LBL VORTAC and hold.

AWOS-3PT <b>118.375</b>	KANSAS CITY CENTER <b>134.0 257.865</b>	UNICOM <b>122.8 (CTAF) 1</b>
----------------------------	--	---------------------------------



CATEGORY	A	B	C	D
S-17	3260-1 383 (400-1)			3260-1½ 383 (400-1½)
<b>C</b> CIRCLING	3340-1 454 (500-1)		3340-1½ 454 (500-1½)	3440-2 554 (600-2)

NC-2, 30 DEC 2021 to 27 JAN 2022

NC-2, 30 DEC 2021 to 27 JAN 2022