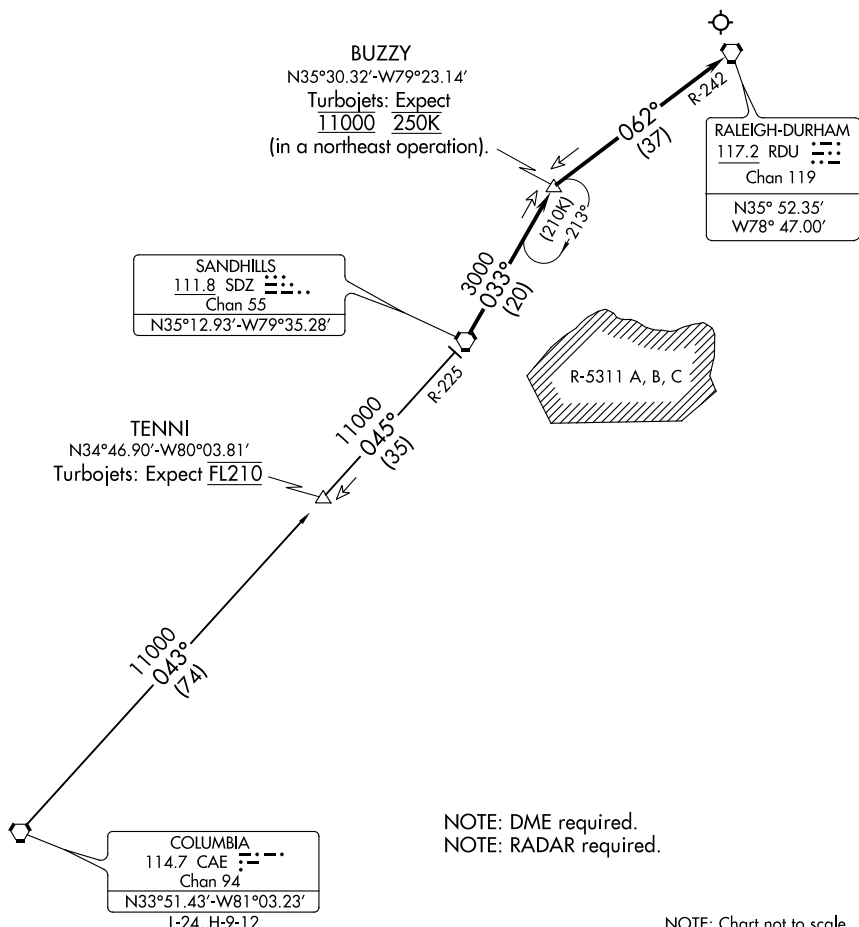


# BUZZY ONE ARRIVAL

RALEIGH APP CON  
127.675 307.9  
D-ATIS  
123.8



SE-2, 30 DEC 2021 to 27 JAN 2022

SE-2, 30 DEC 2021 to 27 JAN 2022

## ARRIVAL ROUTE DESCRIPTION

COLUMBIA TRANSITION (CAE.BUZZY1): From over CAE VORTAC on CAE R-043 and SDZ R-225 to SDZ VORTAC, then on SDZ R-033 to BUZZY.

... Thence on RALEIGH/DURHAM VORTAC R-242 to RDU. Expect RADAR vectors to final approach course after BUZZY.