

LOC/DME I-DMP 111.7 Chan 54	APP CRS 234°	Rwy Idg TDZE Apt Elev 10000 409 435
---	------------------------	---

ILS RWY 23R (CAT II & III)

RALEIGH-DURHAM INTL (RDU)

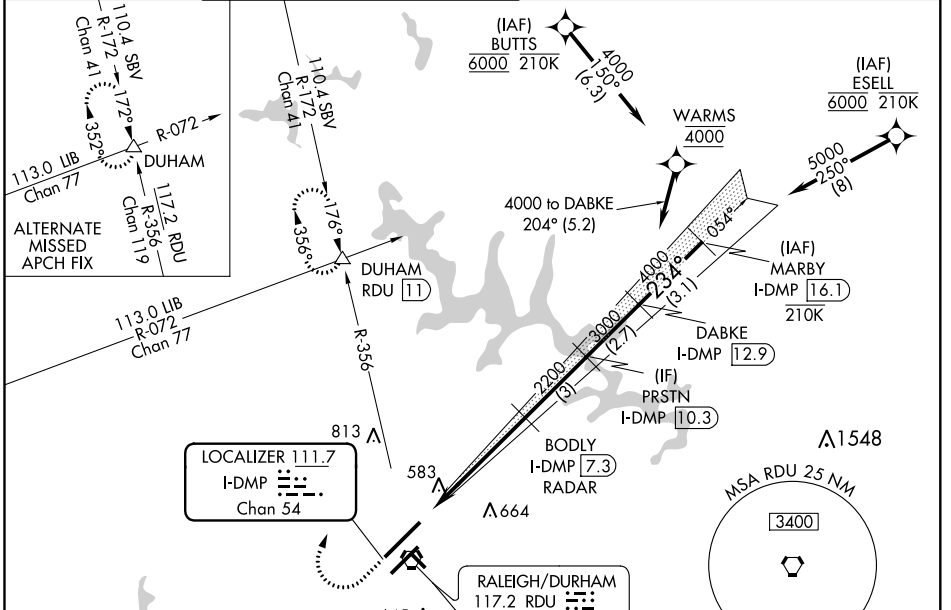
RNAV 1-DME/DME/IRU or GPS or RADAR required for procedure entry.

Simultaneous approach authorized.

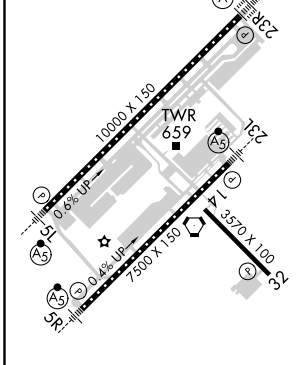
ALSF-2

MISSED APPROACH: Climb to 1000 then climbing right turn to 2200 on RDU VORTAC R-356 to DUHAM INT/ RDU 11 DME and hold.

D-ATIS 123.8	RALEIGH APP CON 127.675 307.9	(EAST) RALEIGH TOWER (WEST) 127.45 257.8 119.3 257.8 Rwys 5R-23L and 14-32 Rwy 5L-23R	(EAST) GND CON (WEST) 121.9 348.6 121.7 348.6 Rwys 5R-23L and 14-32 Rwy 5L-23R	CLNC DEL 120.1	CPDLC
------------------------	---	--	---	--------------------------	-------



ELEV 435	D	TDZE 409
----------	----------	----------



REIL Rwy 32
MIRL Rwy 14-32
HIRL Rwys 5R-23L and 5L-23R
TDZ/CL Rwys 23R, 23L and 5L

1000	2200	RDU R-356	DUHAM	VGSI and ILS glidepath not coincident (VGSI Angle 3.00°/TCH 69°).	
		BODLY I-DMP [7.3]	PRSTN I-DMP [10.3]	DABKE I-DMP [12.9]	MARBY I-DMP [16.1]
11.61'	5.5 NM	3 NM	2.7 NM	3.1 NM	GS 3.00° TCH 55
CATEGORY	A	B	C	D	
S-ILS 23R	CAT II RA 105/12 100 DA 509				
S-ILS 23R	CAT III RVR 06				

CATEGORY II & III ILS - SPECIAL AIRCREW & AIRCRAFT CERTIFICATION REQUIRED

SE-2, 30 DEC 2021 to 27 JAN 2022

SE-2, 30 DEC 2021 to 27 JAN 2022