

LOC/DME I-LEI 108.5 Chan 22	APP CRS 234°	Rwy Idg 7500 TDZE 435 Apt Elev 435
---	------------------------	---

ILS or LOC RWY 23L

RALEIGH-DURHAM INTL (RDU)

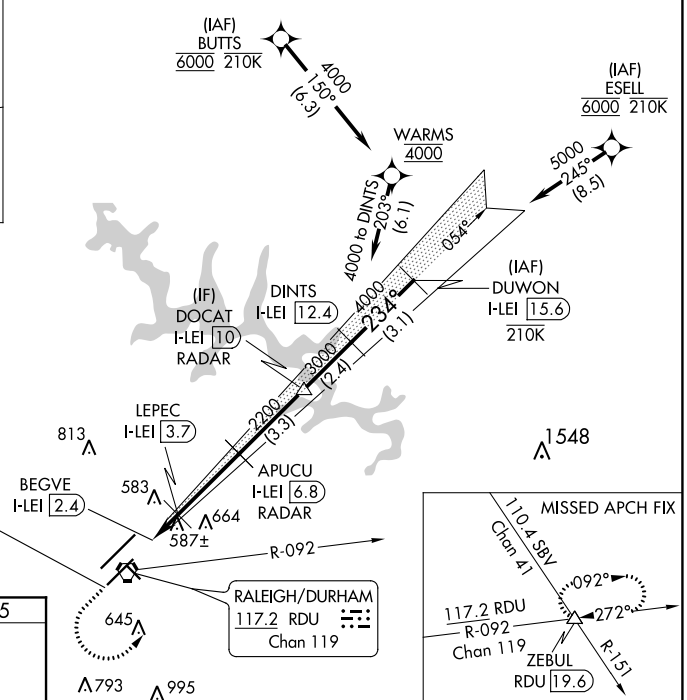
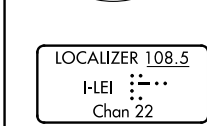
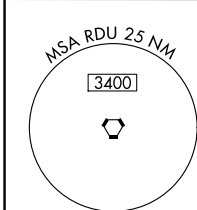
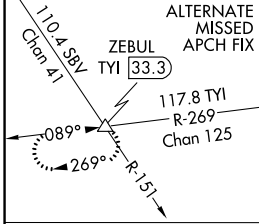
RNAV 1-DME/DME/IRU or GPS or RADAR required for procedure entry.
DME required for LOC only.

⚠ Simultaneous approach authorized. For inop ALS, increase S-ILS 23L all Cats visibility to RVR 5500. Localizer unusable for coupled approaches below 1100 or within 2 NM of threshold.

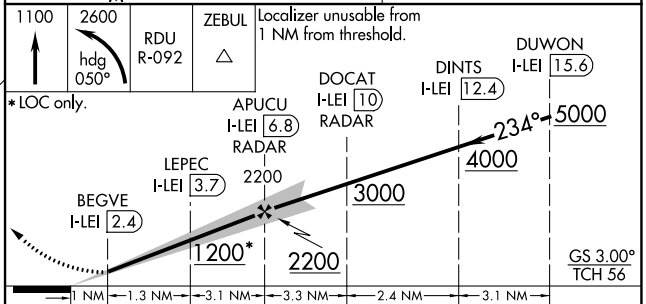
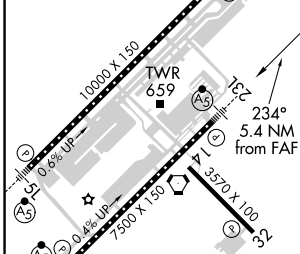


MISSED APPROACH: Climb to 1100 then climbing left turn to 2600 on heading 050° and RDU VORTAC R-092 to ZEBUL INT and hold.

D-ATIS 123.8	RALEIGH APP CON 127.675 307.9	(EAST) RALEIGH TOWER 127.45 257.8	(WEST) RALEIGH TOWER 119.3 257.8	(EAST) GND CON 121.9 348.6	(WEST) GND CON 121.7 348.6	CLNC DEL 120.1	CPDLC
		Rwys 5R-23L and 14-32 Rwy 5L-23R		Rwys 5R-23L and 14-32 Rwy 5L-23R			



ELEV 435	D	TDZE 435
REIL Rwy 32		
MIRL Rwy 14-32		
HIRL Rwys 5R-23L and 5L-23R		
TDZ/CL Rwys 23R, 23L and 5L		



CATEGORY	A	B	C	D
S-ILS 23L		806/35	371 (400- $\frac{3}{4}$)	
S-LOC 23L		840/40	405 (500- $\frac{3}{4}$)	
C CIRCLING	960-1 $\frac{1}{4}$	525 (600-1 $\frac{1}{4}$)	1020-1 $\frac{1}{2}$ 585 (600-1 $\frac{1}{2}$)	1180-2 $\frac{1}{2}$ 745 (800-2 $\frac{1}{2}$)