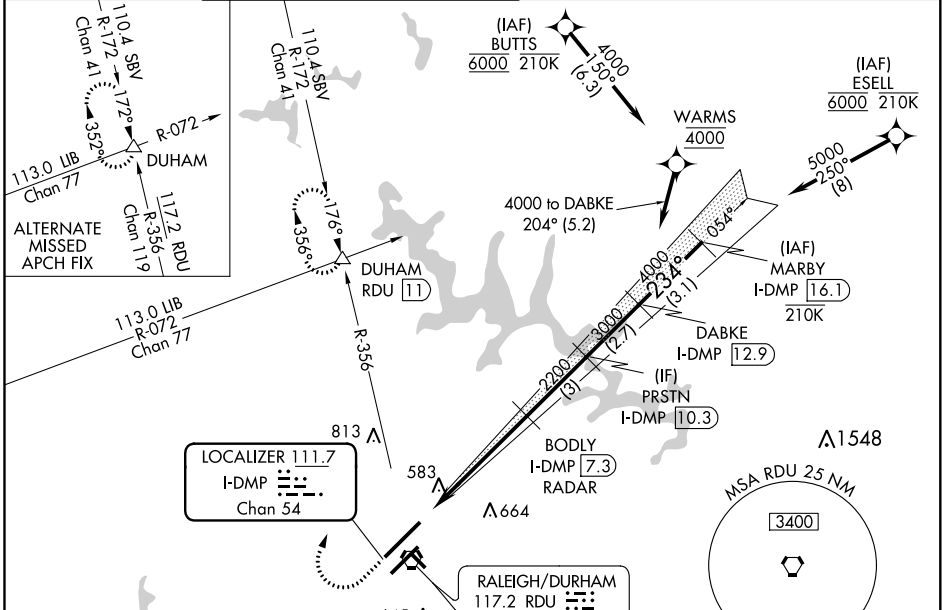


LOC/DME I-DMP 111.7 Chan 54	APP CRS 234°	Rwy Idg TDZE Apt Elev 10000 409 435
---	------------------------	---

ILS or LOC RWY 23R

RALEIGH-DURHAM INTL (RDU)

RNAV 1-DME/DME/IRU or GPS or RADAR required for procedure entry. RADAR or DME required for LOC only.		ALSf-2 	MISSED APPROACH: Climb to 1000 then climbing right turn to 2200 on RDU VORTAC R-356 to DUHAM INT/RDU 11 DME and hold.		
Simultaneous approach authorized. For inop ALS increase S-LOC 23R Cat C/D visibility to 1 1/2 SM.			D-ATIS 123.8	RALEIGH APP CON 127.675 307.9	(EAST) RALEIGH TOWER (WEST) 127.45 257.8 119.3 257.8
			(EAST) GND CON 121.9 348.6	(WEST) GND CON 121.7 348.6	CLNC DEL 120.1
			Rwys 5R-23L and 14-32		CPDLC
			Rwy 5L-23R		
			Rwys 5R-23L and 14-32		
			Rwy 5L-23R		



ELEV 435	TDZE 409
REIL Rwy 32	234° 5.5 NM from FAF
MIRL Rwy 14-32	
HIRL Rwys 5R-23L and 5L-23R	
TDZ/CL Rwys 23R, 23L and 5L	
FAF to MAP 5.5 NM	
Knots	60 90 120 150 180
Min:Sec	5:30 3:40 2:45 2:12 1:50

1000	2200	RDU R-356	DUHAM	VGSI and ILS glidepath not coincident (VGSI Angle 3.00/TCH 69).	
*LOC only.		BODY I-DMP (7.3) RADAR	PRSTN I-DMP (10.3)	DABKE I-DMP (12.9)	MARBY I-DMP (16.1)
I-DMP (1.8)	*I-DMP (3.4)	2200	3000	4000	5000
1.6 NM		3.9 NM		3 NM	2.7 NM
3.1 NM		GS 3.00° TCH 55			
CATEGORY	A	B	C	D	
S-ILS 23R	609/18 200 (200-1/2)				
S-LOC 23R	980/24	571 (600-1/2)	980-1 1/4	571 (600-1 1/4)	
CIRCLING	980-1	545 (600-1)	1020-1 1/2	1180-2 1/2	
			585 (600-1 1/2)	745 (800-2 1/2)	

SE-2, 30 DEC 2021 to 27 JAN 2022

SE-2, 30 DEC 2021 to 27 JAN 2022