

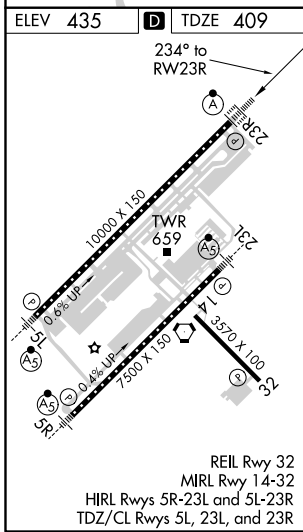
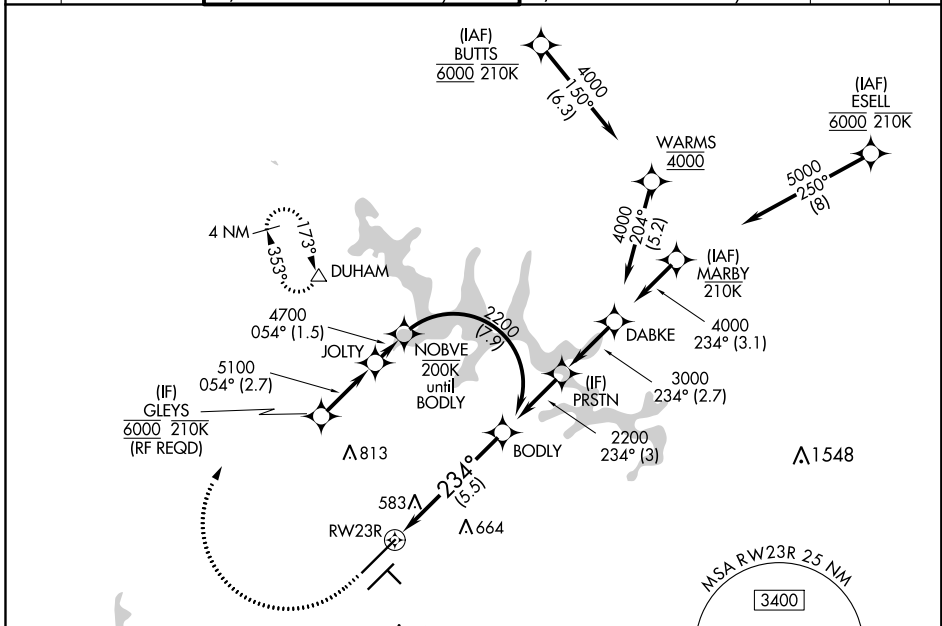
# RNAV (RNP) Z RWY 23R

RALEIGH-DURHAM INTL (RDU)

APP CRS	Rwy Idg	<b>10000</b>
<b>234°</b>	TDZE	<b>409</b>
	Apt Elev	<b>435</b>

RNP AR APCH-GPS.	ALSF-2	MISSED APPROACH: Climb to 1000 then climbing right turn to 2200 direct DUHAM and hold.
<p>▼ For uncompensated Baro-VNAV systems, procedure NA below -12°C or above 54°C. For inop ALS, increase RNP 0.15 all Cats visibility to RVR 5500, increase RNP 0.30 all Cats visibility to 1½ SM. Simultaneous approach authorized except for arrivals at GLEYS.</p>		

D-ATIS	RALEIGH APP CON	(EAST) RALEIGH TOWER (WEST)	(EAST) GND CON	(WEST)	CLNC DEL	CPDLC
<b>123.8</b>	<b>127.675 307.9</b>	<b>127.45 257.8</b> Rwys 5R-23L and 1-4-32	<b>119.3 257.8</b> Rwy 5L-23R	<b>121.9 348.6</b> Rwys 5R-23L and 1-4-32	<b>121.7 348.6</b> Rwy 5L-23R	<b>120.1</b>



ELEV 435	<b>D</b>	TDZE 409		
<p>234° to RWY 23R</p>				
1000	2200	DUHAM	VGSI and RNAV glidepath not coincident (VGSI Angle 3.00°/TCH 69°).	
See planview for multiple IF locations.				
CATEGORY	A	B	C	D
RNP 0.15 DA		760/30	351 (400-¾)	
RNP 0.30 DA		910/55	501 (500-1)	

**AUTHORIZATION REQUIRED**

SE-2, 30 DEC 2021 to 27 JAN 2022

SE-2, 30 DEC 2021 to 27 JAN 2022