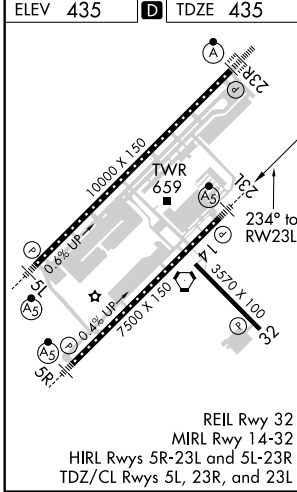
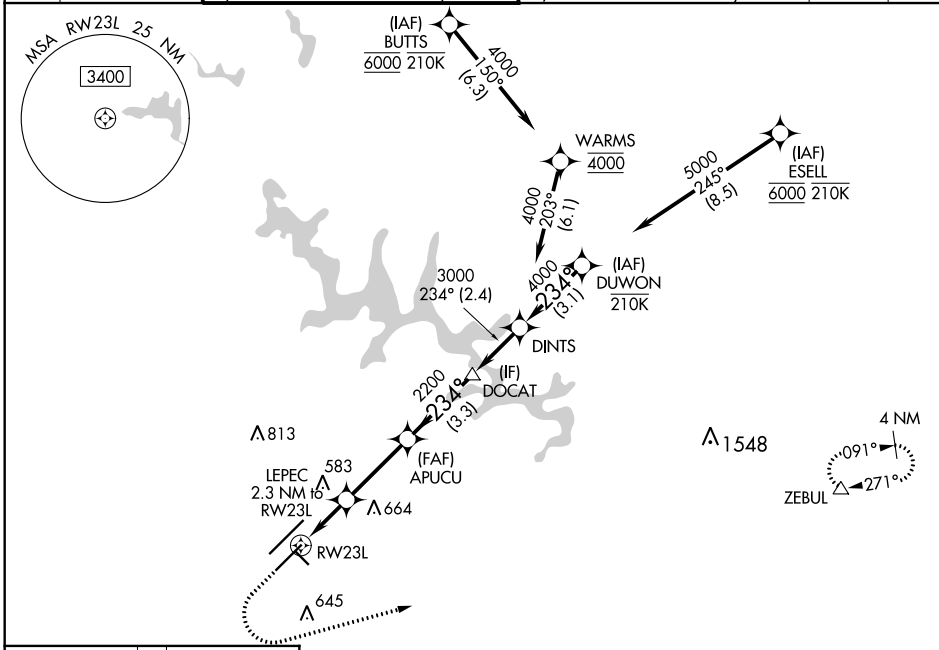


WAAS CH 65713 W23B	APP CRS 234°	Rwy Idg TDZE 435 Apt Elev 435	7500 435 435
--	------------------------	---	---

RNAV (GPS) Y RWY 23L

RALEIGH-DURHAM INTL (RDU)

RNP APCH-GPS.		MALSR	MISSED APPROACH: Climb to 1100 then climbing left turn to 2600 direct ZEBUL and hold.		
Simultaneous approach authorized. LNAV procedure NA during simultaneous operations. For uncompensated Baro-VNAV systems, LNAV/VNAV NA below -1.2°C or above 54°C. Use of FD or AP required during simultaneous operations. For inop ALS, increase LNAV Cat C/D visibility to 1 3/8 SM.					
D-ATIS	RALEIGH APP CON	(EAST) RALEIGH TOWER (WEST)	(EAST) GND CON (WEST)	CLNC DEL	CPDLC
123.8	127.675 307.9	127.45 257.8 Rwys 5R-23L and 14-32	119.3 257.8 Rwy 5L-23R	121.9 348.6 Rwys 5R-23L and 14-32	121.7 348.6 Rwy 5L-23R



ELEV 435	TDZE 435	1100	2600	ZEBUL	DUWON
		* LNAV only.			
		LEPEC 2.3 NM to RW23L	APUCU 2200	DOCAT 3000	DINTS 4000
		*1.4 NM to RW23L			5000
		1200*	2200		GP 3.00°
		1.4 NM	0.9 NM	3.1 NM	3.3 NM
CATEGORY	A	B	C	D	
LPV DA	635/18		200 (200-1/2)		
LNAV/VNAV DA	820/35		385 (400-5/8)		
LNAV MDA	920/24	485 (500-1/2)		920/50	485 (500-1)
CIRCLING	960-1	525 (600-1)		1020-1 1/2	1180-2 1/2
				585 (600-1 1/2)	745 (800-2 1/2)

SE-2, 30 DEC 2021 to 27 JAN 2022

SE-2, 30 DEC 2021 to 27 JAN 2022