

WAAS CH 45613 W23A	APP CRS 234°	Rwy Idg 10000
		TDZE 409
		Apt Elev 435

RNAV (GPS) Y RWY 23R

RALEIGH-DURHAM INTL (RDU)

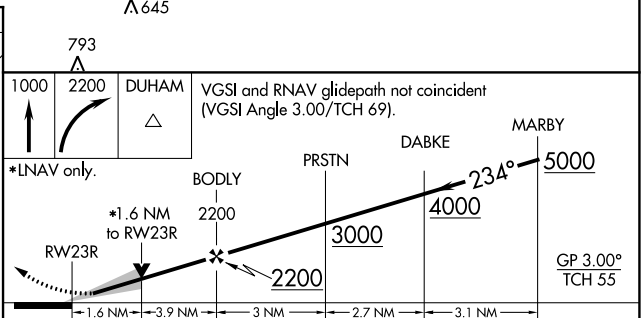
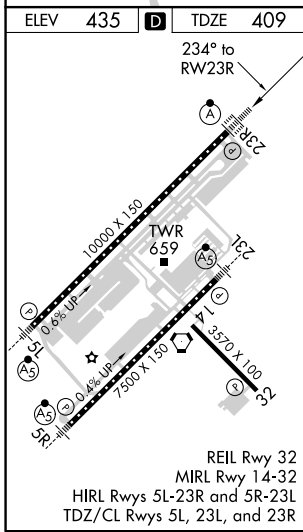
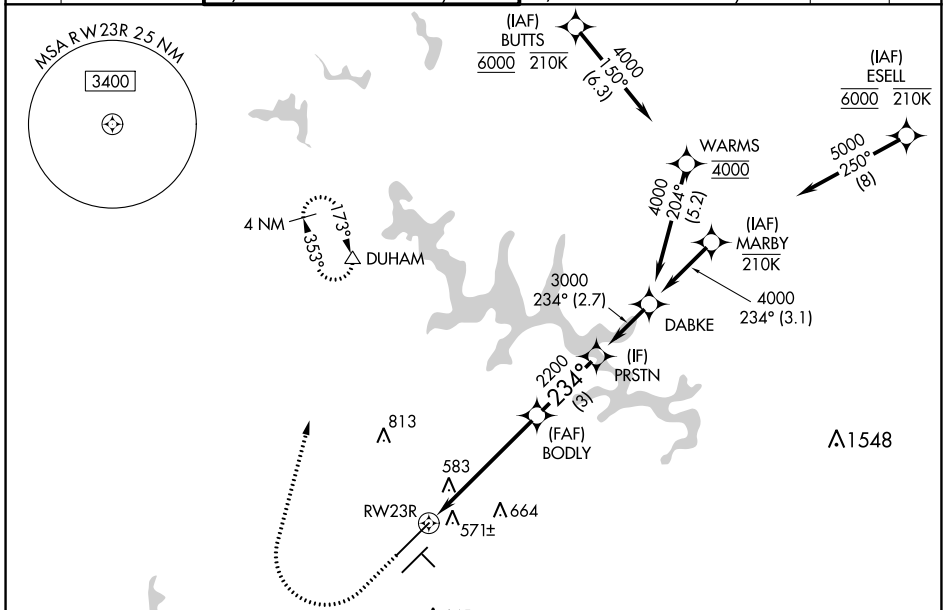
RNP APCH - GPS.

Simultaneous approach authorized. LNAV procedure NA during simultaneous operations.
Use of FD or AP providing RNAV track guidance required during simultaneous operations.
For uncompensated Baro-VNAV systems, LNAV/VNAV NA below -12°C or above 54°C.
For inop ALS, increase LNAV Cat C/D visibility to 1% SM.

ALSF-2

MISSED APPROACH: Climb to 1000 then climbing right turn to 2200 direct DUHAM and hold.

D-ATIS	RALEIGH APP CON	(EAST) RALEIGH TOWER	(WEST)	(EAST) GND CON	(WEST)	CLNC DEL	CPDLC
123.8	127.675 307.9	127.45 257.8	119.3 257.8	121.9 348.6	121.7 348.6	120.1	
		Rwys 5R-23L and 1-4-32	Rwy 5L-23R	Rwys 5R-23L and 1-4-32	Rwy 5L-23R		



CATEGORY	A	B	C	D
LPV DA		609/18	200 (200-1/2)	
LNAV/VNAV DA		735/26	326 (300-1/2)	
LNAV MDA	980/24	571 (600-1/2)	980-1 1/4	571 (600-1 1/4)
CIRCLING	980-1	545 (600-1)	1020-1 5/8 585 (600-1 5/8)	1180-2 1/2 745 (800-2 1/2)

SE-2, 30 DEC 2021 to 27 JAN 2022

SE-2, 30 DEC 2021 to 27 JAN 2022