

(SHPRD4.SHPRD) 21056

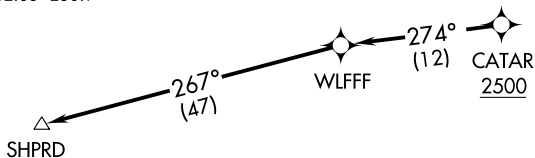
AL-516 (FAA)

RALEIGH-DURHAM INTL (RDU)
RALEIGH/DURHAM, NORTH CAROLINA

SHPRD FOUR DEPARTURE (RNAV)

**TOP ALTITUDE:
6000**

D-ATIS
123.8
CLNC DEL
120.1
CPDLC
GND CON
121.9 348.6 (EAST)
(Rwys 5R-23L, 14-32)
121.7 348.6 (WEST)
(Rwy 5L-23R)
RALEIGH TOWER
127.45 257.8 (EAST)
(Rwys 5R-23L, 14-32)
119.3 257.8 (WEST)
(Rwy 5L-23R)
RALEIGH DEP CON
132.35 256.9



- NOTE: If unable to accept climb rate, advise ATC on initial contact.
- NOTE: RNAV 1.
- NOTE: DME/DME/IRU or GPS required.
- NOTE: RADAR required.
- NOTE: For turbojet aircraft only.

TAKEOFF MINIMUMS

Rwys 14, 32: NA - ATC.

Rwys 5L/R: Standard.

Rwy 23L: Standard with minimum climb of 250' per NM to 2300.

Rwy 23R: Standard with minimum climb of 240' per NM to 2100.

NOTE: Chart not to scale.



DEPARTURE ROUTE DESCRIPTION

TAKEOFF RUNWAYS 5L/R, 23L/R: Climb on assigned heading for RADAR vectors to cross CATAR at or above 2500, thence. . . .

. . . .on depicted route to SHPRD, then as assigned. Maintain 6000, expect clearance to filed altitude within ten minutes after departure.

SHPRD FOUR DEPARTURE (RNAV)
(SHPRD4.SHPRD) 25FEB21

RALEIGH/DURHAM, NORTH CAROLINA
RALEIGH-DURHAM INTL (RDU)

SE-2, 30 DEC 2021 to 27 JAN 2022

SE-2, 30 DEC 2021 to 27 JAN 2022