

# RNAV (RNP) Y RWY 31L

PALM SPRINGS INTL (PSP)

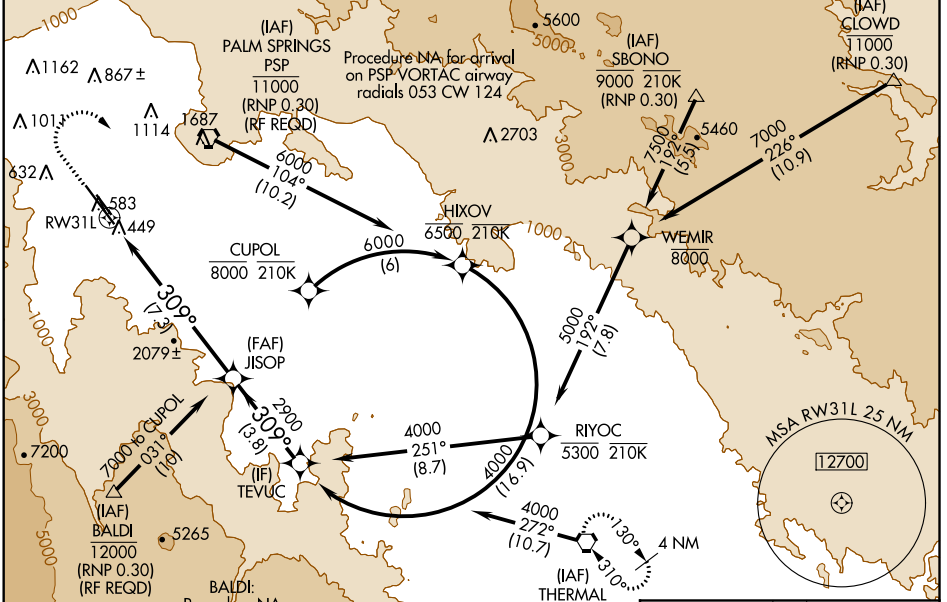
APP CRS	Rwy Idg	<b>8500</b>
<b>309°</b>	TDZE	<b>430</b>
	Apt Elev	<b>477</b>

RNP AR APCH.

**▽**  
**▲** Missed approach requires minimum climb of 340' per NM to 3000. For uncompensated Baro-VNAV systems, procedure NA below 2°C or above 54°C.

MISSED APPROACH: Climb to 1800, then climbing right turn to 4000 direct TRM VORTAC and hold.

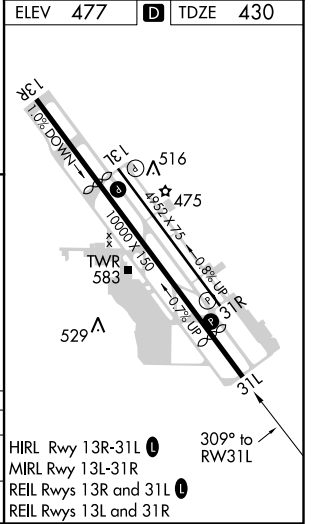
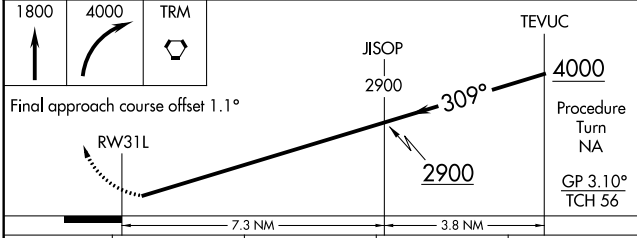
ATIS	SOCAL APP CON *	PALM SPRINGS TOWER *	GND CON	CLNC DEL	UNICOM
<b>124.65</b>	<b>126.7 370.95</b> <b>135.275 251.1</b>	<b>119.7 (CTAF) 0 377.05</b>	<b>121.9</b>	<b>128.35</b>	<b>122.95</b>



SW-3, 30 DEC 2021 to 27 JAN 2022

SW-3, 30 DEC 2021 to 27 JAN 2022

ELEV	<b>477</b>	D	TDZE	<b>430</b>
------	------------	---	------	------------



CATEGORY	A	B	C	D
RNP 0.30 DA	734-1 304 (300-1)			

## AUTHORIZATION REQUIRED