

RNAV (RNP) Z RWY 13R

PALM SPRINGS INTL (PSP)

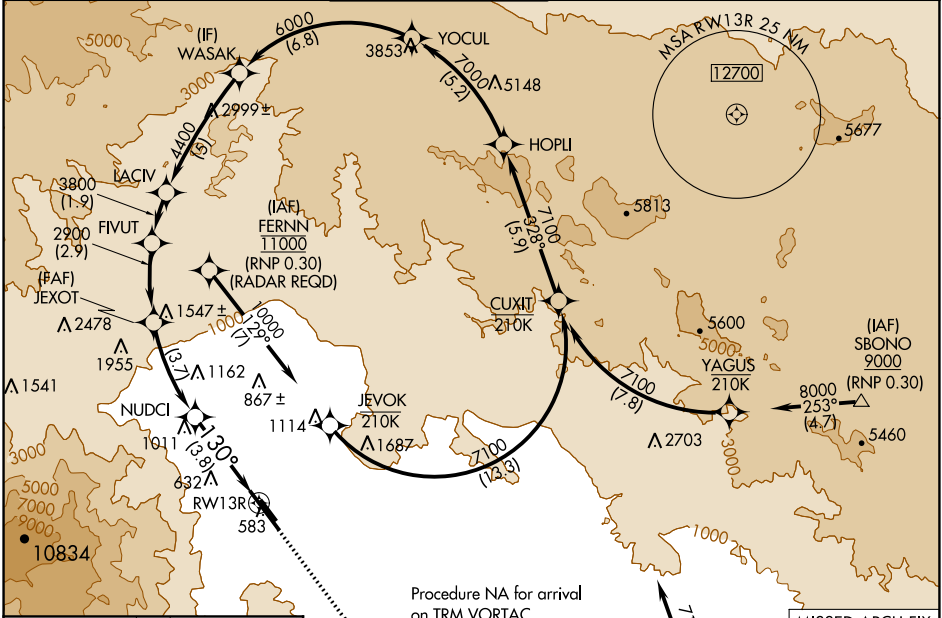
| | | |
|-------------|----------|-------------|
| APP CRS | Rwy Idg | 6857 |
| 130° | TDZE | 451 |
| | Apt Elev | 476 |

RNP AR APCH, RF required.

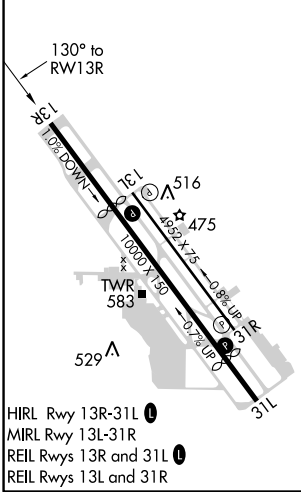
⚠ For uncompensated Baro-VNAV systems, procedure NA below 1°C or above 54°C.

MISSED APPROACH: Climb to 900 then climbing left turn to 4000 direct TRM VORTAC and hold.

| | | | | | |
|---------------|---|------------------------------|--------------|---------------|---------------|
| ATIS | SOCAL APP CON* | PALM SPRINGS TOWER* | GND CON | CLNC DEL | UNICOM |
| 124.65 | 126.7 370.95 135.275 251.1 | 119.7 (CTAF) 0 377.05 | 121.9 | 128.35 | 122.95 |



| | | |
|----------|----------|----------|
| ELEV 476 | D | TDZE 451 |
|----------|----------|----------|



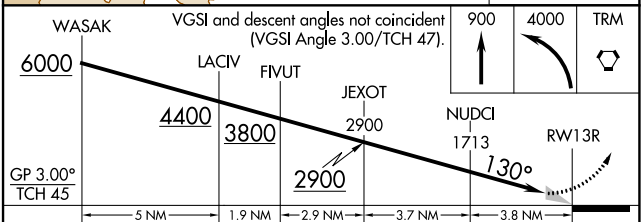
PALM SPRINGS, CALIFORNIA
Amdt 1A 05DEC19

Procedure NA for arrival on TRM VORTAC airway radials 263 CW 021.

(IAF) THERMAL TRM 9000 (RNP 0.30)

MISSED APCH FIX

THERMAL TRM 130° 4 NM



| CATEGORY | A | B | C | D |
|-------------|---|--------|--------------|---|
| RNP 0.17 DA | | 812-1¼ | 361 (400-1¼) | |
| RNP 0.30 DA | | 882-1½ | 431 (500-1½) | |

AUTHORIZATION REQUIRED

33°50'N-116°30'W

RNAV (RNP) Z RWY 13R

SW-3, 30 DEC 2021 to 27 JAN 2022

SW-3, 30 DEC 2021 to 27 JAN 2022