

AUSTIN SIX DEPARTURE

AL-556 (FAA)

AUSTIN-BERGSTROM INTL (AUS)

AUSTIN, TEXAS

**TOP ALTITUDE:
ASSIGNED BY ATC**

D-ATIS

124.4

CLNC DEL

125.5 263.0

CPDLC

GND CON

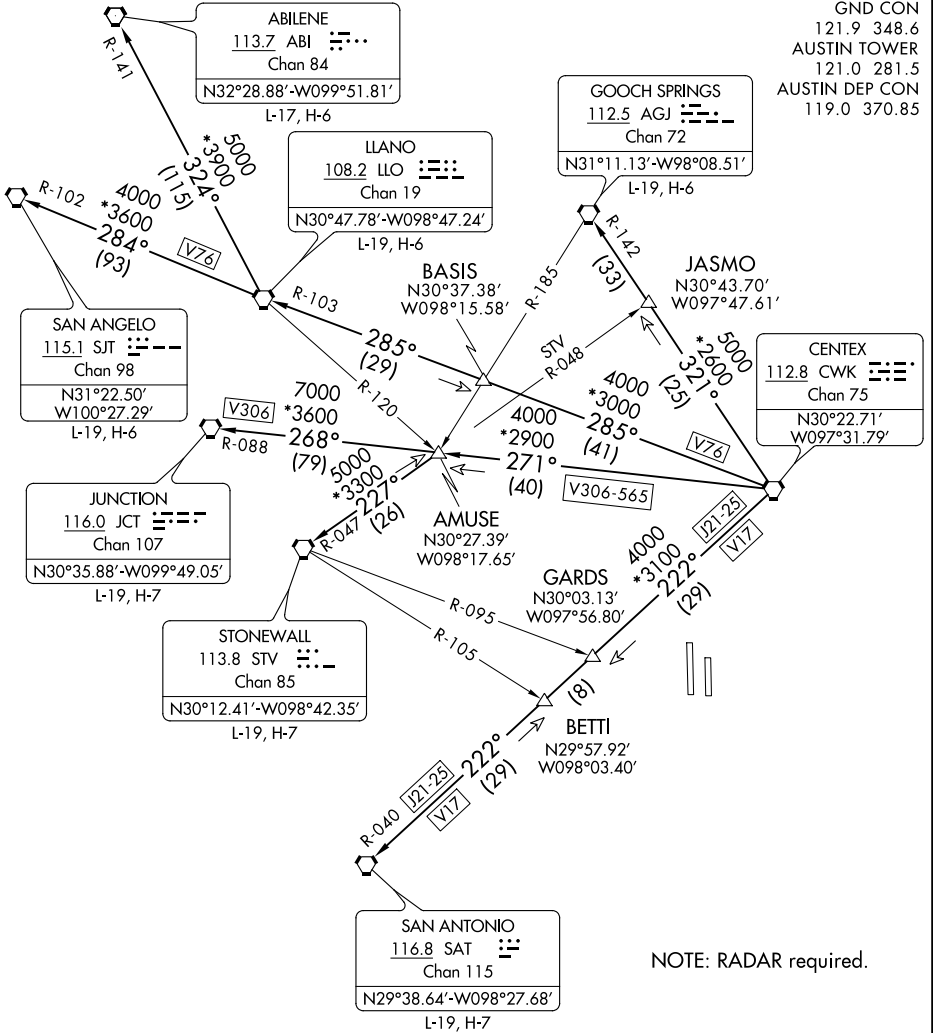
121.9 348.6

AUSTIN TOWER

121.0 281.5

AUSTIN DEP CON

119.0 370.85



TAKEOFF MINIMUMS

Rwys 18L/R: Standard.

Rwys 36L/R: Standard with minimum climb of 240' per NM to 2600.

NOTE: RADAR required.

(NARRATIVE ON FOLLOWING PAGE)

NOTE: Chart not to scale.

AUSTIN SIX DEPARTURE

AUSTIN, TEXAS

AUSTIN-BERGSTROM INTL (AUS)

SC-3, 30 DEC 2021 to 27 JAN 2022

SC-3, 30 DEC 2021 to 27 JAN 2022