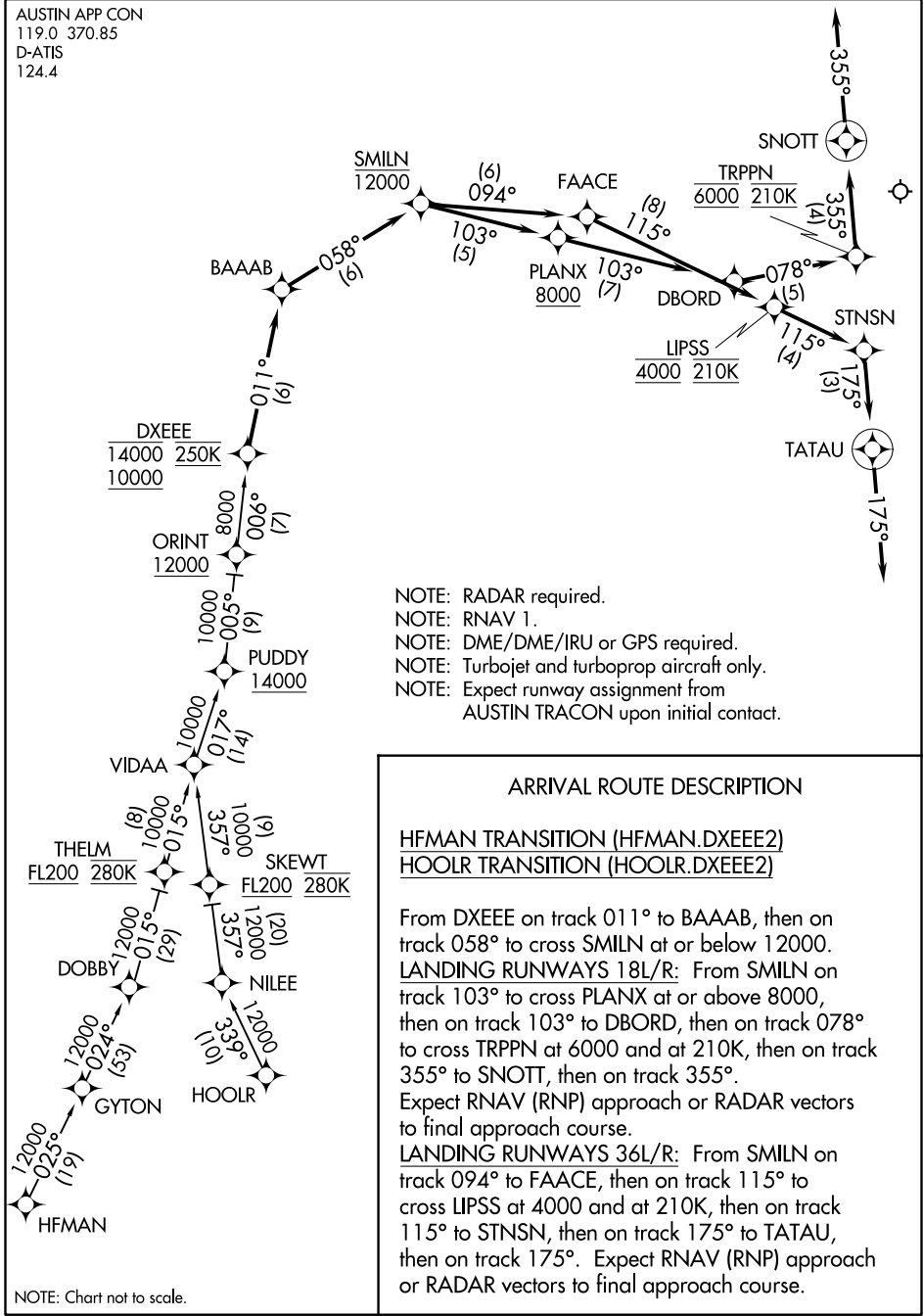


DXEE TWO ARRIVAL (RNAV)

AUSTIN APP CON
119.0 370.85
D-ATIS
124.4



NOTE: RADAR required.
 NOTE: RNAV 1.
 NOTE: DME/DME/IRU or GPS required.
 NOTE: Turbojet and turboprop aircraft only.
 NOTE: Expect runway assignment from AUSTIN TRACON upon initial contact.

NOTE: Chart not to scale.

SC-3, 30 DEC 2021 to 27 JAN 2022

SC-3, 30 DEC 2021 to 27 JAN 2022