

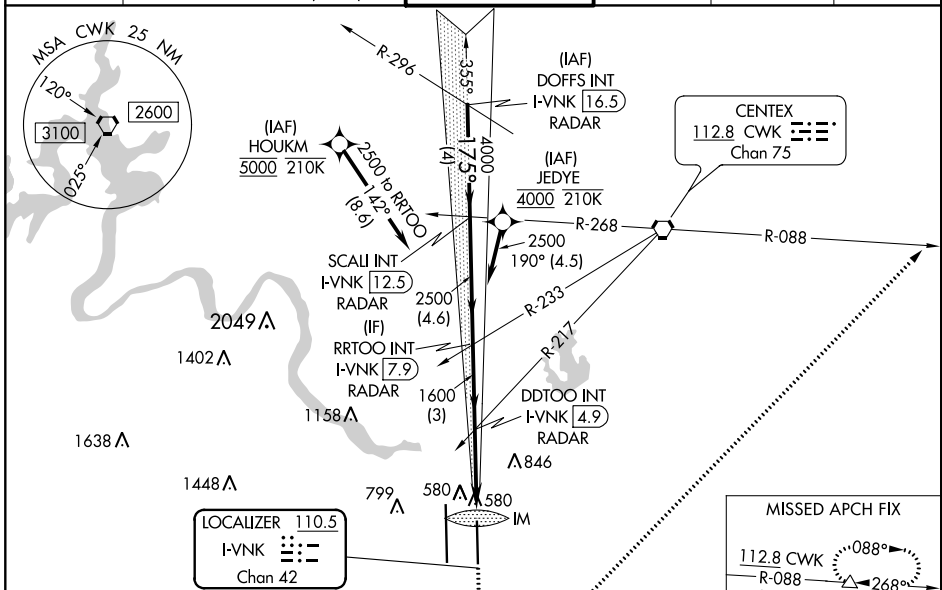
LOC/DME I-VNKG <b>110.5</b> Chan 42	APP CRS <b>175°</b>	Rwy Idg TDZE <b>492</b> Apt Elev <b>542</b>	<b>9000</b>
---	------------------------	---	-------------

# ILS RWY 18L (SA CAT I)

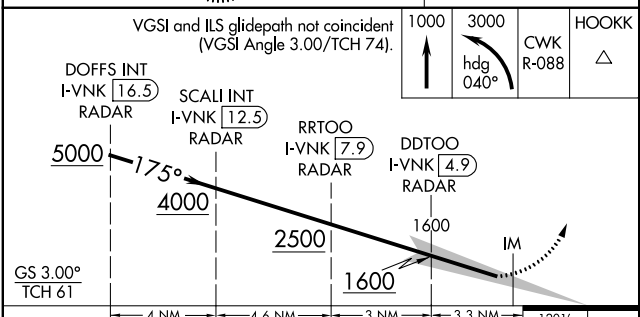
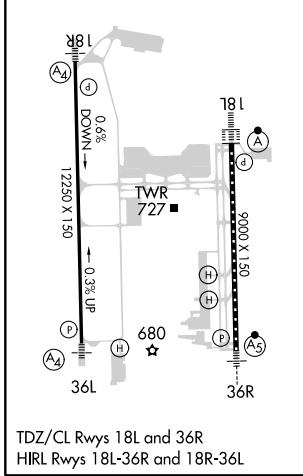
## AUSTIN-BERGSTROM INTL (AUS)

RNAV 1-GPS or RADAR required for procedure entry. DME required. From HOUKM, JEDYE: RNAV 1-GPS required.		ALSIF-2 A	MISSED APPROACH: Climb to 1000, then climbing left turn to 3000 on heading 040° and CWK VORTAC R-088 to HOOKK/CWK 17 DME and hold.
<p>Simultaneous approach authorized. Requires specific OPSPEC, MSPEC or LOA approval.</p>			

D-ATIS <b>124.4</b>	AUSTIN APP CON <b>127.225 317.65</b> (EAST) <b>120.875 270.25</b> (SOUTH) <b>119.0 370.85</b> (WEST)	AUSTIN TOWER <b>121.0 281.5</b>	GND CON <b>121.9 348.6</b>	CLNC DEL <b>125.5 263.0</b>	CPDLC
------------------------	---	------------------------------------	-------------------------------	--------------------------------	-------



ELEV 542	<b>D</b>	TDZE 492
----------	----------	----------



VGSI and ILS glidepath not coincident (VGSI Angle 3.00/TCH 74).	1000	3000	CWK R-088	HOOKK
	↑	hdg 040°		△
DOFFS INT I-VNKG 16.5	SCALI INT I-VNKG 12.5	RRTOO I-VNKG 7.9	DDTOO I-VNKG 4.9	
5000	4000	2500	1600	IM
GS 3.00°				
TCH 61	4 NM	4.6 NM	3 NM	3.3 NM
CATEGORY	A	B	C	D
S-ILS 18L	RA 155/14 150 DA 642			

**SA CATEGORY I - SPECIAL AIRCREW & AIRCRAFT CERTIFICATION REQUIRED**

SC-3, 30 DEC 2021 to 27 JAN 2022

SC-3, 30 DEC 2021 to 27 JAN 2022