

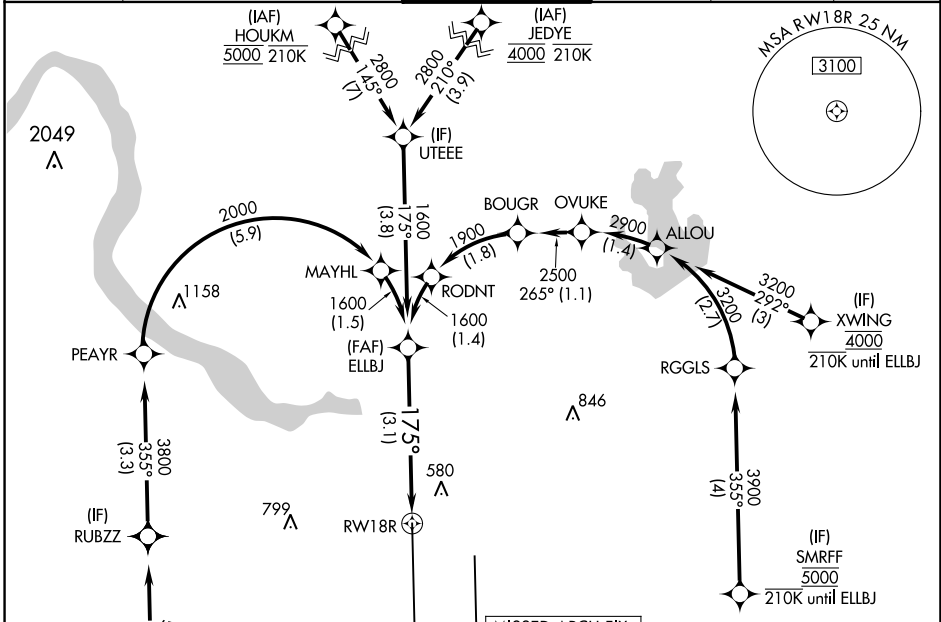
RNAV (RNP) Z RWY 18R

AUSTIN-BERGSTROM INTL (AUS)

APP CRS	Rwy Idg	12250
175°	TDZE	542
	Apt Elev	542

RNP AR APCH-GPS. RADAR required.		MALS	MISSED APPROACH: Climb to 1000 then climbing right turn to 3500 direct GARDS and hold.
Simultaneous approach authorized. For uncompensated Baro-VNAV systems, procedure NA below -5°C or above 54°C.			

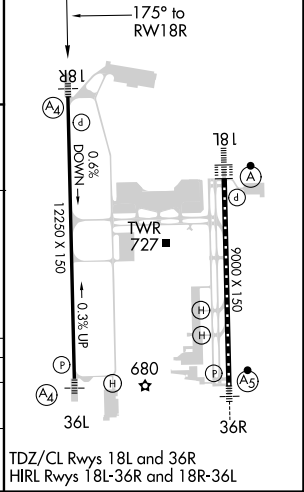
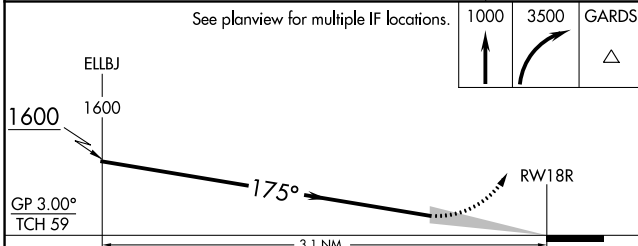
D-ATIS	AUSTIN APP CON	AUSTIN TOWER	GND CON	CLNC DEL	CPDLC
124.4	127.225 317.65 (EAST) 120.875 270.25 (SOUTH) 119.0 370.85 (WEST)	121.0 281.5	121.9 348.6	125.5 263.0	



ELEV 542	D TDZE 542
----------	-------------------

See planview for multiple IF locations.

1000	3500	GARDS



CATEGORY	A	B	C	D
RNP 0.30 DA		883/40	341 (400-¾)	

AUTHORIZATION REQUIRED

TDZ/CL Rws 18L and 36R
HIRL Rws 18L-36R and 18R-36L

SC-3, 30 DEC 2021 to 27 JAN 2022

SC-3, 30 DEC 2021 to 27 JAN 2022