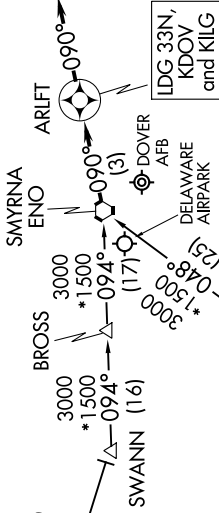


ARLFT TWO ARRIVAL (RNAV)

DOVER/CHESWOLD, DELAWARE

DOVER APP CON
132.425 257.875
33N AWOS-3
120.125
DOV D-ATIS
127.825 273.3
ILG ATIS
123.95



LDG 33N,
KDOV
and KILG

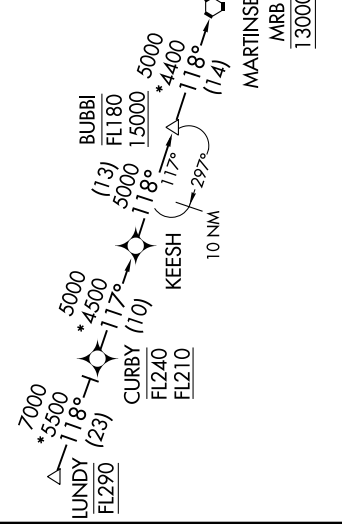


NOTE: RADAR required
NOTE: RNAV 1
NOTE: DME/DME/IRU or GPS required
NOTE: LUNDDY Transition for KDOV and 33N arrivals only
NOTE: BUBBI Transition ATC assigned only

NE-3, 30 DEC 2021 to 27 JAN 2022

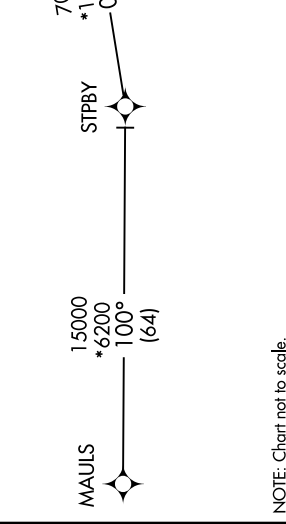
ARLFT TWO ARRIVAL (RNAV)

DOVER/CHESWOLD, DELAWARE



BUBBI TRANSITION (BUBBI.ARLFT2)
LUNDDY TRANSITION (LUNDDY.ARLFT2)
MAULS TRANSITION (MAULS.ARLFT2)
THHMP TRANSITION (THHMP.ARLFT2)

LANDING KDOV/33N/KILG: From ENO VORTAC on track 090° to ARLFT, then on heading 090° or as assigned by ATC. Expect RADAR vectors to final approach course.



NOTE: Chart not to scale.

NE-3, 30 DEC 2021 to 27 JAN 2022