

DOVER, DELAWARE

ILS or LOC RWY 1

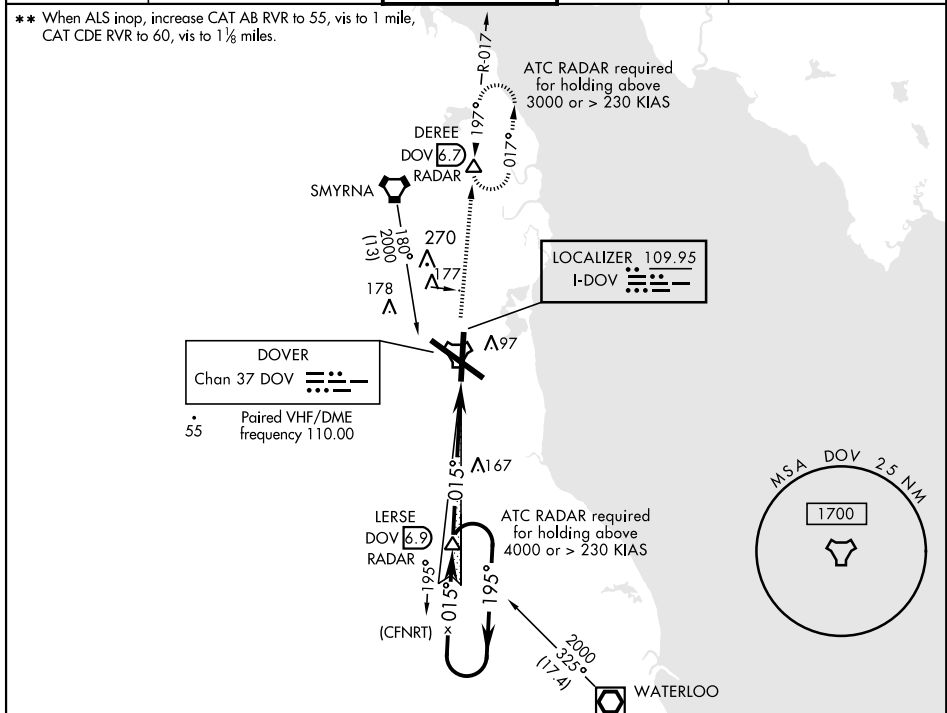
DOVER AFB (KDOV)

LOC I-DOV 109.95	APCH CRS 015°	Rwy Idg TDZE Arpt Elev 9602 25 29
----------------------------	-------------------------	---

AL-562 [USAF]

RADAR or DME required. * When TDZL/CL inop increase RVR to 24, RVR of 18 authorized with use of FD or AP or HUD to DA. When ALS inop, increase RVR to 40, vis to ¼ mile.	ALSF-2 	MISSED APPROACH: Climb to 2000 via DOV TACAN R-017 to DERE/DOV 6.7 DME and hold.
--	------------	--

ATIS 127.825 273.5	DOVER APP CON 132.425 257.875	DOVER TOWER 126.35 279.625	GND CON 118.875 225.4	CLNC DEL 125.55 289.4
------------------------------	---	--------------------------------------	---------------------------------	---------------------------------



EMERG SAFE ALT 100 NM 4300	ELEV 29		TDZE 25		
VGSI and ILS glidepath not coincident (VGSI Angle 3.00/TCH 75).	Rwy 14 Idg 8652'		61		
	LERSE DOV RADAR 6.9	2000 DOV R-017	DERE DOV 6.7	TACAN SISME 1.0	
	† LOC Only † 2 † 23 † 49				
CATEGORY	A	B	C	D	E
S-ILS 1 *	225/18		200	(200-½)	
S-LOC 1**	440/24	415 (500-½)	440/40	415	(500-¾)
CIRCLING	500-1	540-1	580-1½	620-2	1080-3
	471 (500-1)	511 (600-1)	551 (600-1½)	591 (600-2)	1051 (1100-3)
HIRL all Rwy REIL Rwy 32 TDZL/CL Rwy 1			015° 6.1 NM from FAF		

DOVER, DELAWARE

39°08'N-75°28'W

DOVER AFB (KDOV)

Amdt 1 05DEC19

ILS or LOC RWY 1

NE-3, 30 DEC 2021 to 27 JAN 2022

NE-3, 30 DEC 2021 to 27 JAN 2022