

DOVER, DELAWARE

ILS or LOC RWY 19

DOVER AFB (KDOV)

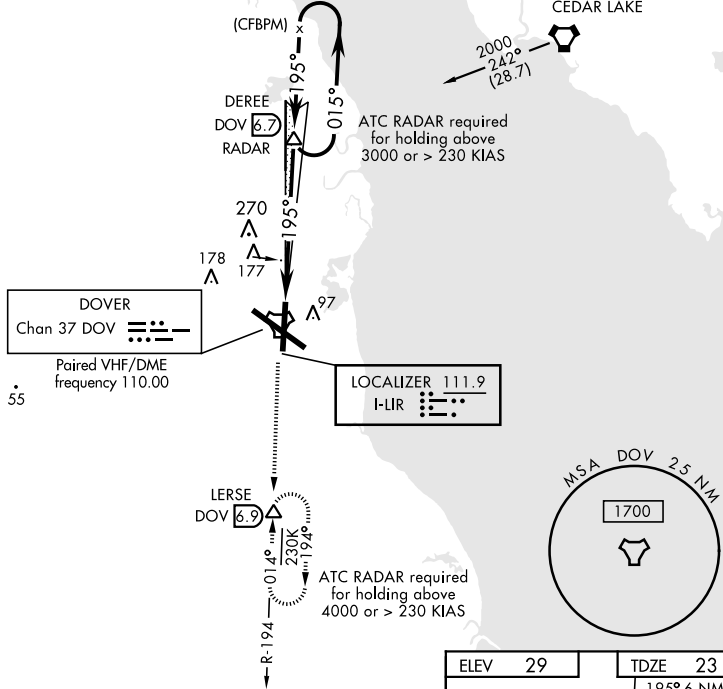
LOC I-LIR 111.9	APCH CRS 195°	Rwy Ldg TDZE Arpt Elev 9602 23 29
---------------------------	-------------------------	---

AL-562 [USAF]

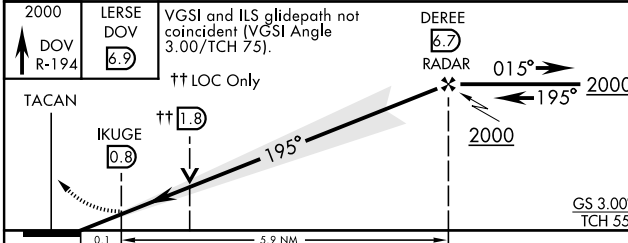
RADAR or DME required.	ALSF-1 	MISSED APPROACH: Climb to 2000 via DOV TACAN R-194 to LERSE/DOV 6.9 DME and hold.
<p>▼ * When ALS inop, increase RVR to 40, vis to 3/4 mile.</p> <p>** When ALS inop, increase CAT AB RVR to 55, vis to 1 mile; CAT CDE vis to 1 1/4 miles.</p>		

ATIS 127.825 273.5	DOVER APP CON 132.425 257.875	DOVER TOWER 126.35 279.625	GND CON 118.875 225.4	CLNC DEL 125.55 289.4
------------------------------	---	--------------------------------------	---------------------------------	---------------------------------

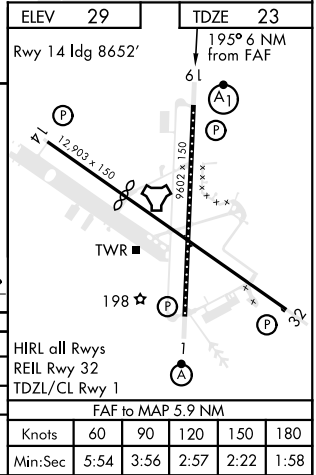
† RVR of 18 authorized with use of FD or AP or HUD to DA.



EMERG SAFE ALT 100 NM 4300



2000 DOV R-194	LERSE DOV 6.9	VGSI and ILS glidepath not coincident (VGSI Angle 3.00/TCH 75).	DEREE DOV 6.7 RADAR		
TACAN	IKUGE 0.8	†† LOC Only	015° → 2000		
0.1		5.9 NM			
CATEGORY	A	B	C	D	E
S-ILS 19 * †	223/24		200	(200-1/2)	
S-LOC 19 **	460/24	437 (500-1/2)	460/40		437 (500-3/4)
CIRCLING	500-1	540-1	580-1 1/2	620-2	1080-3
	471 (500-1)	511 (600-1)	551 (600-1 1/2)	591 (600-2)	1051 (1100-3)



DOVER, DELAWARE

39°08'N-75°28'W

DOVER AFB (KDOV)

Amdt 1 05DEC19

ILS or LOC RWY 19

NE-3, 30 DEC 2021 to 27 JAN 2022

NE-3, 30 DEC 2021 to 27 JAN 2022