

DOVER, DELAWARE

RNAV (GPS) RWY 1

WAAS CH 52207 W01A	APCH CRS 015°	Rwy ldg 9602 TDZE 25 Arpt Elev 29
--------------------------	------------------	---

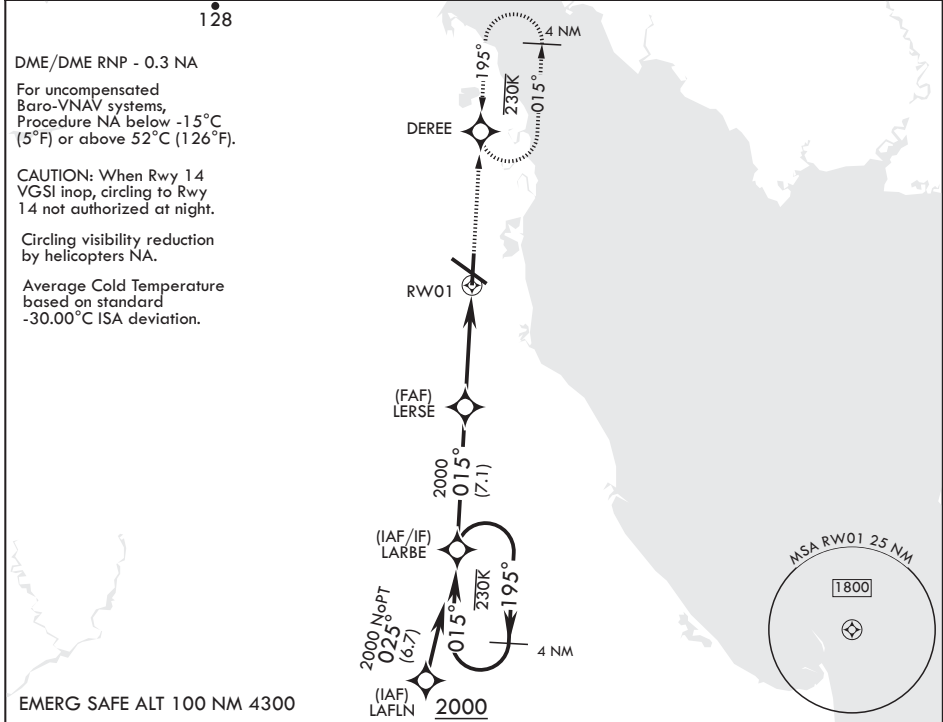
AL-562 (USAF)

DOVER AFB (KDOV)

V * When ALS inop, increase RVR to 40, vis to 3/4 mile. When TDZL/CL lights inop, increase RVR to 24.
 ** When ALS inop, increase CAT AB RVR to 45, vis to 7/8 mile; CAT CD RVR to 50, vis to 1 mile.
 *** When ALS inop, increase CAT AB RVR to 55, vis to 1 mile; CAT CD vis to 1 1/4 miles.

ALSF-2 **MISSED APPROACH:** Climb to 2000 direct DERE and hold, continue climb-in-hold to 2000.

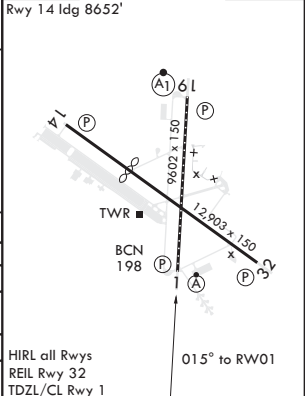
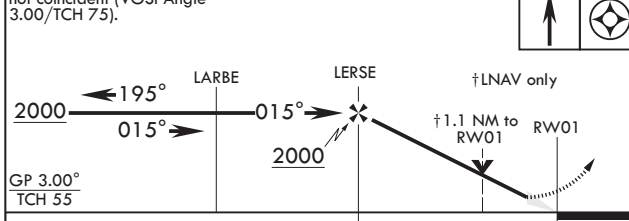
ATIS 127.825 273.5	APP CON 132.425 257.875	TOWER 126.35 279.625	GND CON 118.875 225.4	CLNC DEL 125.55 289.4
-----------------------	----------------------------	-------------------------	--------------------------	--------------------------



EMERG SAFE ALT 100 NM 4300

VGSI and RNAV glidepath not coincident (VGSI Angle 3.00/TCH 75).

2000 DERE ELEV 29 TDZE 25
 Rwy 14 ldg 8652'



CATEGORY	A	B	C	D
LPV DA*	225/18		200	(200-1/2)
RNAV/VNAV DA**	329/24 304 (300-1/2)	340/24 315 (400-1/2)	348/26 323 (400-1/2)	359/26 334 (400-1/2)
RNAV MDA***	460/24	435 (500-1/2)	460/40	435 (500-3/4)
C CIRCLING	500-1 471 (500-1)	520-1 491 (500-1)	540-1 1/2 511 (600-1 1/2)	580-2 551 (600-2)

HIRL all Rws
REIL Rwy 32
TDZL/CL Rwy 1

DOVER, DELAWARE
Amdt 2 05DEC19

39°08'N - 75°28'W

DOVER AFB (KDOV)

RNAV (GPS) RWY 1

NE-3, 30 DEC 2021 to 27 JAN 2022

NE-3, 30 DEC 2021 to 27 JAN 2022