

DOVER, DELAWARE

# RNAV (GPS) RWY 19

WAAS CH 52208 W19A	APCH CRS 195°	Rwy ldg TDZE Arprt Elev	9602 23 29
--------------------------	------------------	-------------------------------	------------------

AL-562 (USAF)

DOVER AFB (KDOV)

**V** \* When ALS inop, increase RVR to 40, vis to 3/4 mile.  
 \*\* When ALS inop, increase RVR to 45, vis to 7/8 miles.  
 \*\*\* When ALS inop, increase CAT AB RVR to 55, vis to 1 mile, CAT CD vis to 1 1/4 miles.



MISSED APPROACH: Climb to 2000 direct LERSE and hold.

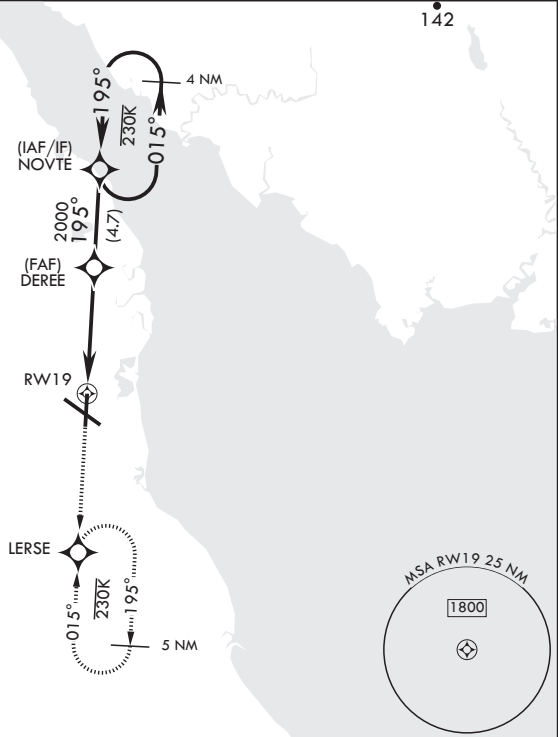
ATIS 127.825 273.5	APP CON 132.425 257.875	TOWER 126.35 279.625	GND CON 118.875 225.4	CLNC DEL 125.55 289.4
-----------------------	----------------------------	-------------------------	--------------------------	--------------------------

DME/DME RNP - 0.3 NA

For uncompensated Baro-VNAV systems, procedure NA below -15°C (5°F) or above 52°C (127°F).

CAUTION: When Rwy 14 VGSi inop, circling to Rwy 14 NA at night.

Circling visibility reduction by helicopters NA.



EMERG SAFE ALT 100 NM 4300



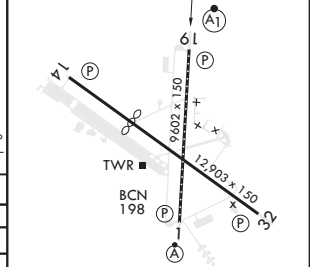
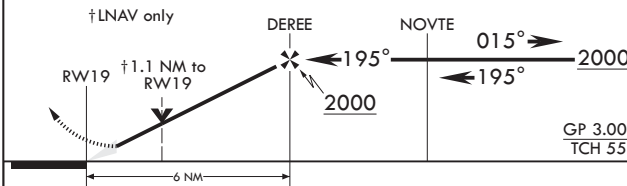
VGSi and RNAV glidepath not coincident (VGSi Angle 3.00°/TCH 75).

ELEV 29

Rwy 14 ldg 8652'

TDZE 23

195° to RWY 19



CATEGORY	A	B	C	D
LPV DA*	223/24		200	(200-1/2)
LNAV/VNAV DA**	310/24 287 (300-1/2)	321/24 298 (300-1/2)	329/24 306 (300-1/2)	340/24 317 (400-1/2)
LNAV MDA***	460/24	437 (500-1/2)	460/40	437 (500-3/4)
CIRCLING	500-1	520-1	540-1 1/2	580-2
	471 (500-1)	491 (500-1)	511 (600-1 1/2)	551 (600-2)

REIL Rwy 32  
 HIRL all Rwys  
 TDZL/CL Rwy 1

DOVER, DELAWARE  
 Amdt 2 05DEC19

39°08'N - 75°28'W

DOVER AFB (KDOV)

# RNAV (GPS) RWY 19

NE-3, 30 DEC 2021 to 27 JAN 2022

NE-3, 30 DEC 2021 to 27 JAN 2022