

DOVER, DELAWARE

RNAV (GPS) RWY 32

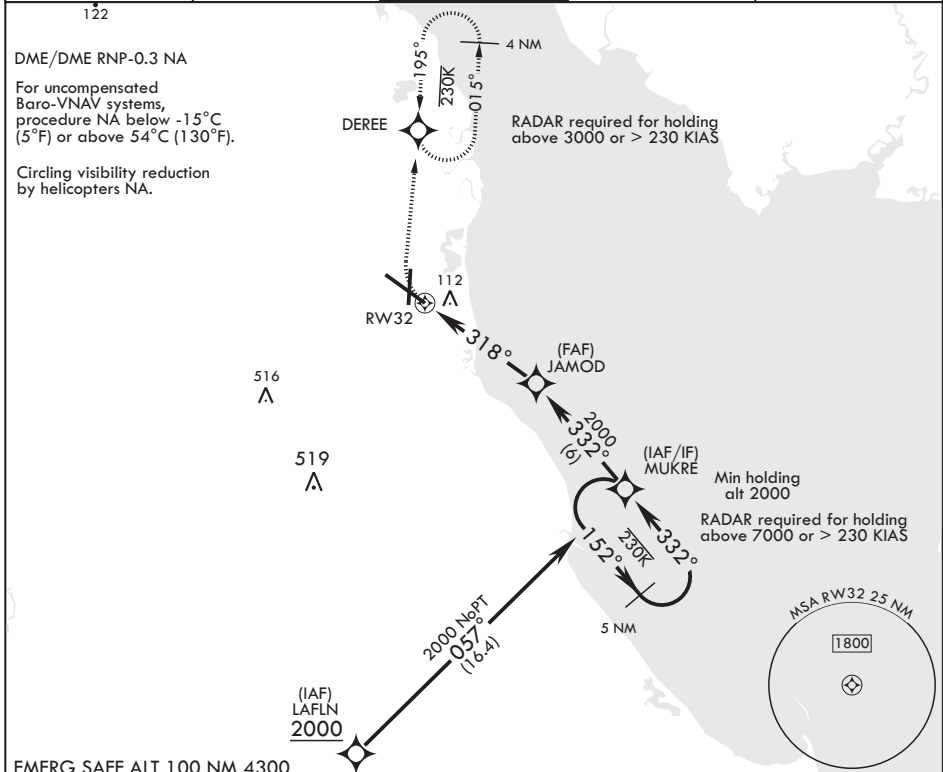
WAAS CH 91360 W32A	APCH CRS 318°	Rwy ldg TDZE 26 Arpt Elev 29	12,903
---------------------------------	-------------------------	--	---------------

AL-562 (USAF)

DOVER AFB (KDOV)

▽ MISSED APPROACH: Climbing right turn to 2000 direct DERE and hold, continue climb-in-hold to 2000.

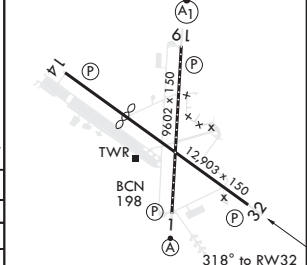
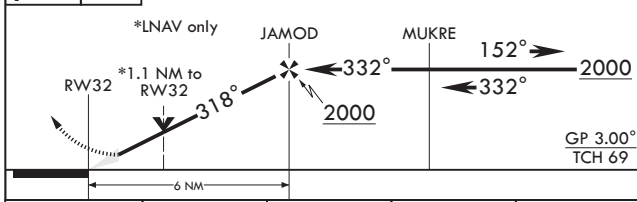
ATIS 127.825 273.5	APP CON 132.425 257.875	TOWER 126.35 279.625	GND CON 118.875 225.4	CLNC DEL 125.55 289.4
------------------------------	-----------------------------------	---------------------------------------	---------------------------------	---------------------------------



EMERG SAFE ALT 100 NM 4300

2000	DERE	5 NM holding pattern	ELEV 29	TDZE 26
------	------	----------------------	---------	---------

Rwy 14 ldg 8652'



CATEGORY	A	B	C	D
LPV DA	276-3/4	250	(300-3/4)	
LNAV/VNAV DA	456-1 1/4	430	(500-1 1/4)	
LNAV MDA	460-1	434 (500-1)	460-1 1/4	434 (500-1 1/4)
CIRCLING	500-1	520-1	540-1 1/2	580-2
	471 (500-1)	491 (500-1)	511 (600-1 1/2)	551 (600-2)

REIL Rwy 32
HIRL all Rwys
TDZL/CL Rwy 1

DOVER, DELAWARE
Amdt 4 05DEC19

39°08'N - 75°28'W

DOVER AFB (KDOV)

RNAV (GPS) RWY 32

NE-3, 30 DEC 2021 to 27 JAN 2022

NE-3, 30 DEC 2021 to 27 JAN 2022