

LOC I-CNW 110.7	APP CRS 174°	Rwy Idg TDZE Apt Elev	8600 470 470
---------------------------	------------------------	-----------------------------	---

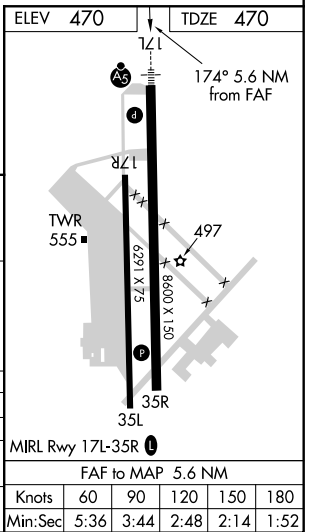
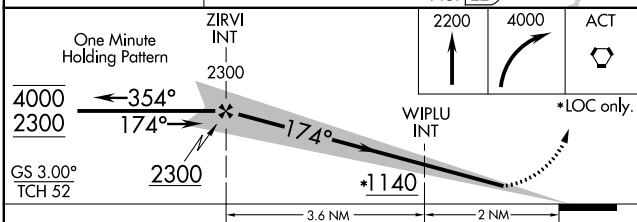
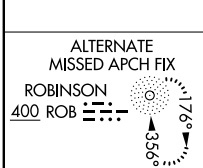
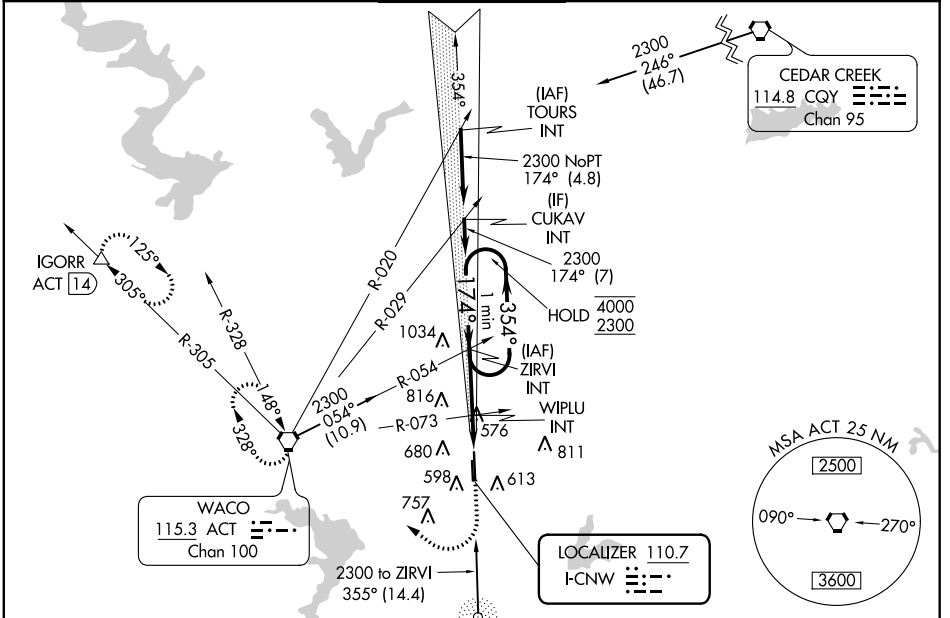
ILS or LOC RWY 17L

TSTC WACO (CNW)

NA For inop ALS, increase S-ILS 17L Cat E visibility to $\frac{3}{4}$ SM, and S-LOC 17L Cat E to $\frac{1}{8}$ SM.
ASR

MALSR
MISSED APPROACH: Climb to 2200 then climbing right turn to 4000 direct ACT VORTAC and hold.
(TACAN aircraft continue on ACT VORTAC R-305 to IGORR /ACT 14 DME and hold SE, RT, 305° inbound)

AWOS-3 134.225	WACO APP CON * 127.65 227.125	TSTC TOWER * 124.0(CTAF) 255.7	GND CON 121.7	UNICOM 122.95
--------------------------	---	--	-------------------------	-------------------------



CATEGORY	A	B	C	D	E
S-ILS 17L	670- $\frac{1}{2}$ 200 (200- $\frac{1}{2}$)				
S-LOC 17L	860- $\frac{1}{2}$	390 (400- $\frac{1}{2}$)	860- $\frac{5}{8}$ 390 (400- $\frac{5}{8}$)		
CIRCLING	940-1 470 (500-1)	1040-1 570 (600-1)	1040-1 $\frac{1}{2}$ 570 (600-1 $\frac{1}{2}$)	1120-2 650 (700-2)	1180-2 $\frac{1}{2}$ 710 (800-2 $\frac{1}{2}$)

MRL Rwy 17L-35R	FAF to MAP 5.6 NM				
Knots	60	90	120	150	180
Min:Sec	5:36	3:44	2:48	2:14	1:52

SC-3, 30 DEC 2021 to 27 JAN 2022

SC-3, 30 DEC 2021 to 27 JAN 2022