

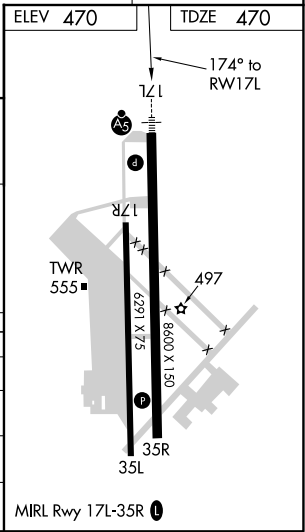
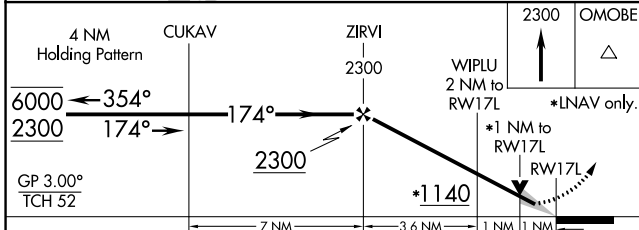
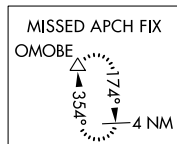
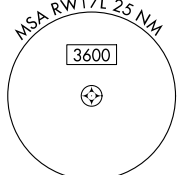
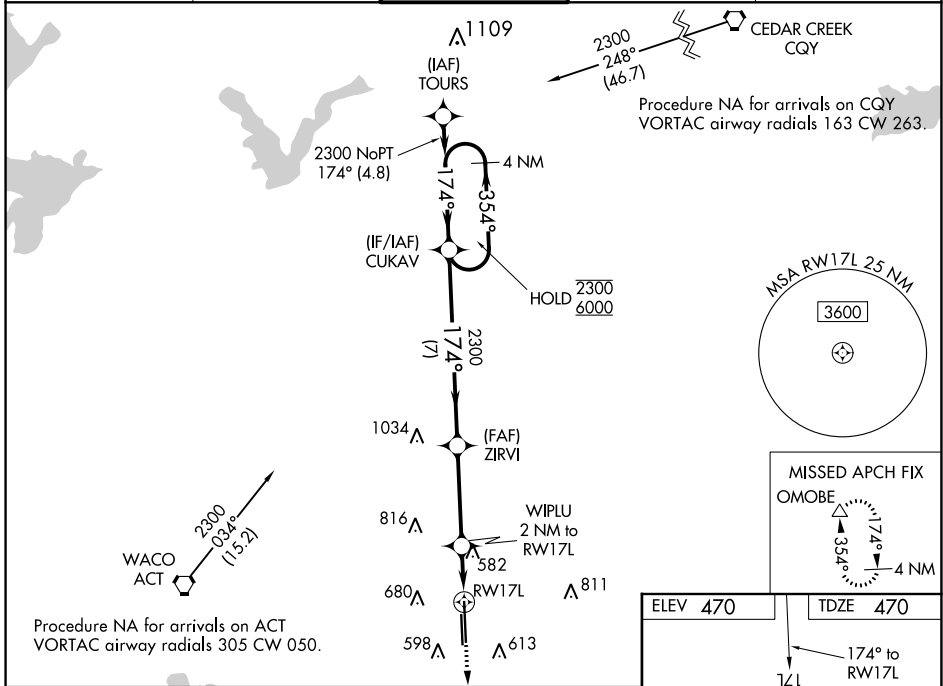
WAAS CH 73020 W17A	APP CRS 174°	Rwy Idg TDZE Apt Elev	8600 470 470
--	------------------------	-----------------------------	---

RNAV (GPS) RWY 17L

TSTC WACO (CNW)

RNP APCH.	MALSR	MISSED APPROACH: Climb to 2300 direct OMOBE and hold.
<p>▼ For uncompensated Baro-VNAV systems, LNAV/VNAV NA below -15°C or above 54°C. For inop ALS, increase LNAV/VNAV all Cats visibility to ¾ SM and LNAV Cats C/D visibility to 1 SM.</p> <p>▲ ASR</p>		

AWOS-3 134.225	WACO APP CON ★ 127.65 227.125	TSTC TOWER ★ 124.0 (CTAF) 255.7	GND CON 121.7	UNICOM 122.95
--------------------------	---	---	-------------------------	-------------------------



CATEGORY	A	B	C	D
LPV DA		670-½	200 (200-½)	
LNAV/VNAV DA		720-½	250 (300-½)	
LNAV MDA	840-½	370 (400-½)	840-⅝	370 (400-⅝)
CIRCLING	940-1 470 (500-1)	1040-1 570 (600-1)	1040-1½ 570 (600-1½)	1120-2 650 (700-2)