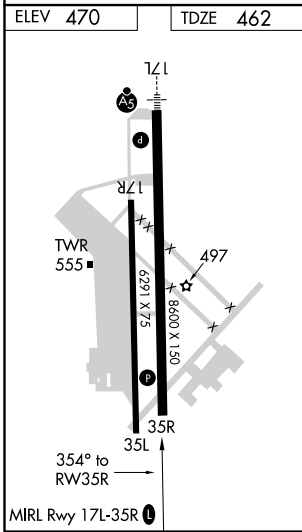
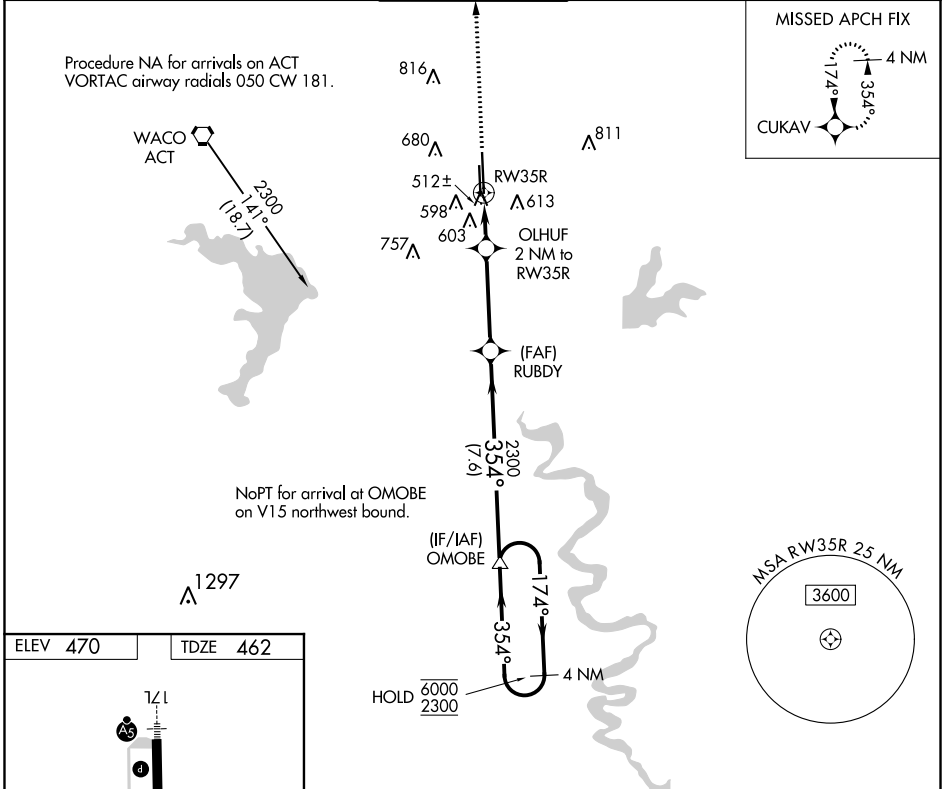


WAAS CH <b>82731</b> <b>W35A</b>	APP CRS <b>354°</b>	Rwy Idg TDZE Apt Elev	<b>8600</b> <b>462</b> <b>470</b>
--	------------------------	-----------------------------	---

# RNAV (GPS) RWY 35R

TSTC WACO (CNW)

RNP APCH. ASR	MISSED APPROACH: Climb to 2300 direct CUKAV and hold.		
AWOS-3 <b>134.225</b>	WACO APP CON ★ <b>127.65 227.125</b>	TSTC TOWER ★ <b>124.0(CTAF) 255.7</b>	GND CON <b>121.70</b>
			UNICOM <b>122.95</b>



2300	CUKAV	RUBDY	OMOBE	4 NM Holding Pattern
↑	✧	OLHUF 2 NM to RW35R		
0.9 NM to RW35R	3.00°	TCH 41	354°	174° → 6000 ← 354° 2300
0.9	1.1	3.7 NM	7.6 NM	
CATEGORY	A	B	C	D
LP MDA	780-1 318 (400-1)			
LNAV MDA	860-1 398 (400-1)		860-1½ 398 (400-1½)	

SC-3, 30 DEC 2021 to 27 JAN 2022

SC-3, 30 DEC 2021 to 27 JAN 2022