

WAAS CH 53634 W18A	APP CRS 177°	Rwy Idg TDZE Apt Elev	4331 881 881
--	------------------------	-----------------------------	---

RNAV (GPS) RWY 18

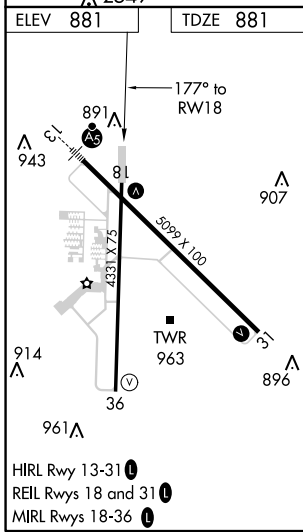
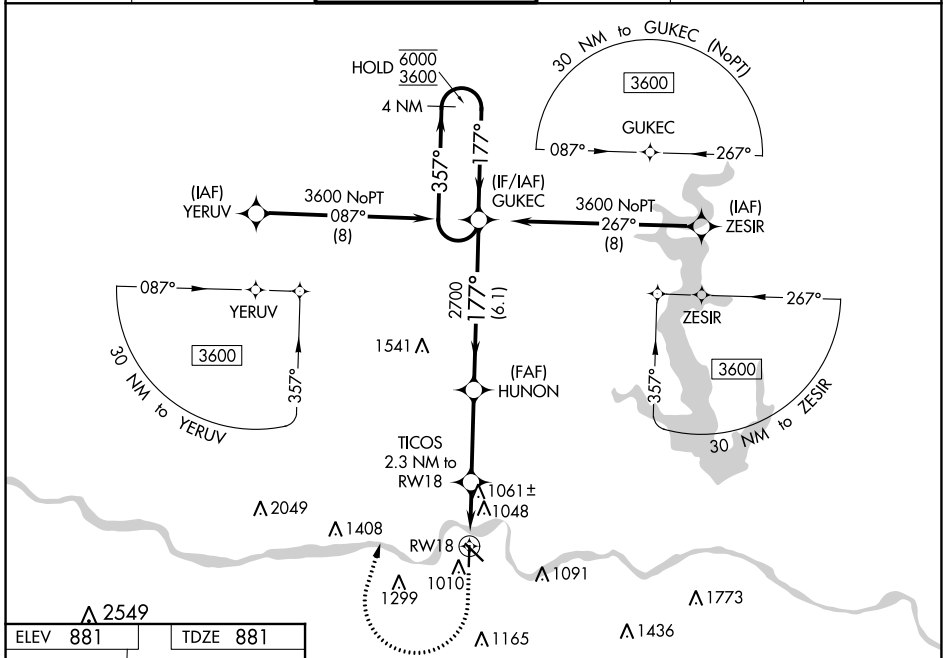
PHILIP BILLARD MUNI (TOP)

RNP APCH.

▼ Rwy 18 helicopter visibility reduction below 3/4 SM NA.
For uncompensated Baro-VNAV systems, LNAV/VNAV NA below -19°C or above 54°C.

MISSED APPROACH: Climb to 1500 then climbing right turn to 3600 direct GUKEC and hold.

ASOS 121.275	KANSAS CITY CENTER 123.8 343.7	TOPEKA TOWER * 118.7 (CTAF) 0 257.8	GND CON 121.9	CLNC DEL 121.9	UNICOM 122.95
------------------------	--	---	-------------------------	--------------------------	-------------------------



ELEV 881	TDZE 881	1500		3600	GUKEC	GUKEC	4 NM Holding Pattern
*LNAV only		TICOS 2.3 NM to RW18		HUNON 2700		357° → 6000 ← 177° 3600	
		1.3 NM to RW18		1640		177° → 2700 ← 2700	
		1.3 NM		1 NM		3.3 NM	
		6.1 NM				GP 3.00° TCH 35	
CATEGORY	A	B	C	D			
LPV DA	1174-1 293 (300-1)			NA			
LNAV/VNAV DA	1340-1 459 (500-1 1/2)			NA			
LNAV MDA	1320-1	439 (500-1)	1320-1 1/4	439 (500-1 1/2)			
CIRCLING	1360-1	1440-1	1600-2	NA			
	479 (500-1)	559 (600-1)	719 (800-2)				

NC-2, 30 DEC 2021 to 27 JAN 2022

NC-2, 30 DEC 2021 to 27 JAN 2022