

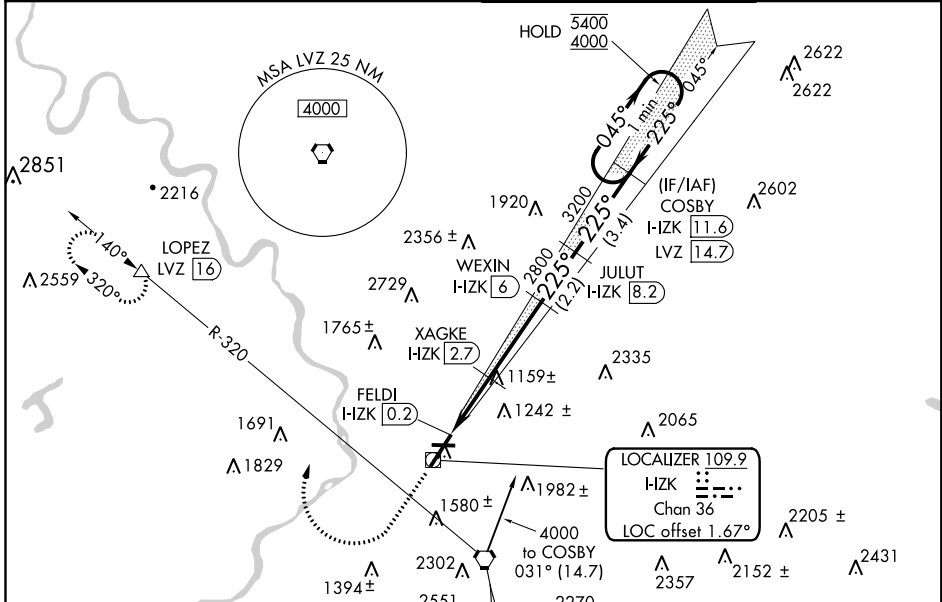
LOC/DME I-ZK 109.9 Chan 36	APP CRS 225°	Rwy Idg 7501 TDZE 933 Apt Elev 962
------------------------------------------------	------------------------	---------------------------------------------------------------

ILS or LOC RWY 22

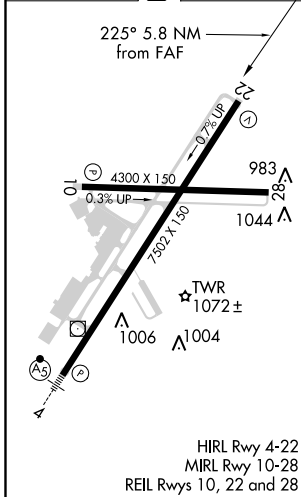
WILKES-BARRE/SCRANTON INTL (AVP)

RADAR or DME required for procedure entry. DME required.		MISSED APPROACH: Climb to 1900 then climbing right turn to 4000 on heading 330° and LVZ VORTAC R-320 to LOPEZ/LVZ 16 DME and hold.
<p>⚠ Circling NA for Cats C and D southeast of Rwy 4-22. Circling Rwy 28 NA at night. When local altimeter setting not received, procedure NA.</p>		

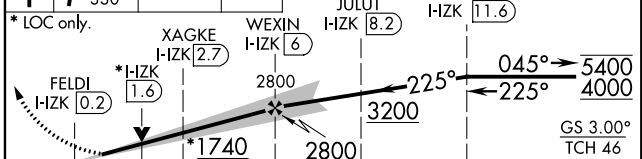
ATIS 111.6	WILKES-BARRE APP CON 120.95 256.7 126.3 256.7 (101°-279°)	WILKES-BARRE TOWER 120.1 257.8	GND CON 121.9
----------------------	-------------------------------------------------------------------------------	------------------------------------------	-------------------------



ELEV 962	D	TDZE 933
----------	----------	----------



1900	4000	LOPEZ LVZ R-320	VGSI and ILS glidepath not coincident (VGSI Angle 3.00/TCH 54).	One Minute Holding Pattern
------	------	-----------------	-----------------------------------------------------------------	----------------------------



CATEGORY	A	B	C	D
S-ILS 22	1201/45		268 (300-7%)	
S-LOC 22	1420/55	487 (500-1)	1420-1 ³ / ₈	487 (500-1 ³ / ₈)
C CIRCLING	1840-1 ¹ / ₄ 878 (900-1 ¹ / ₄)	1980-1 ¹ / ₂ 1018 (1100-1 ¹ / ₂)	1980-3 1018 (1100-3)	2280-3 1318 (1400-3)

NE-4, 30 DEC 2021 to 27 JAN 2022

NE-4, 30 DEC 2021 to 27 JAN 2022