

LOC/DME I-AVP 109.9 Chan 36	APP CRS 045°	Rwy Idg TDZE Apt Elev	7501 962 962
---	------------------------	-----------------------------	---

ILS or LOC RWY 4

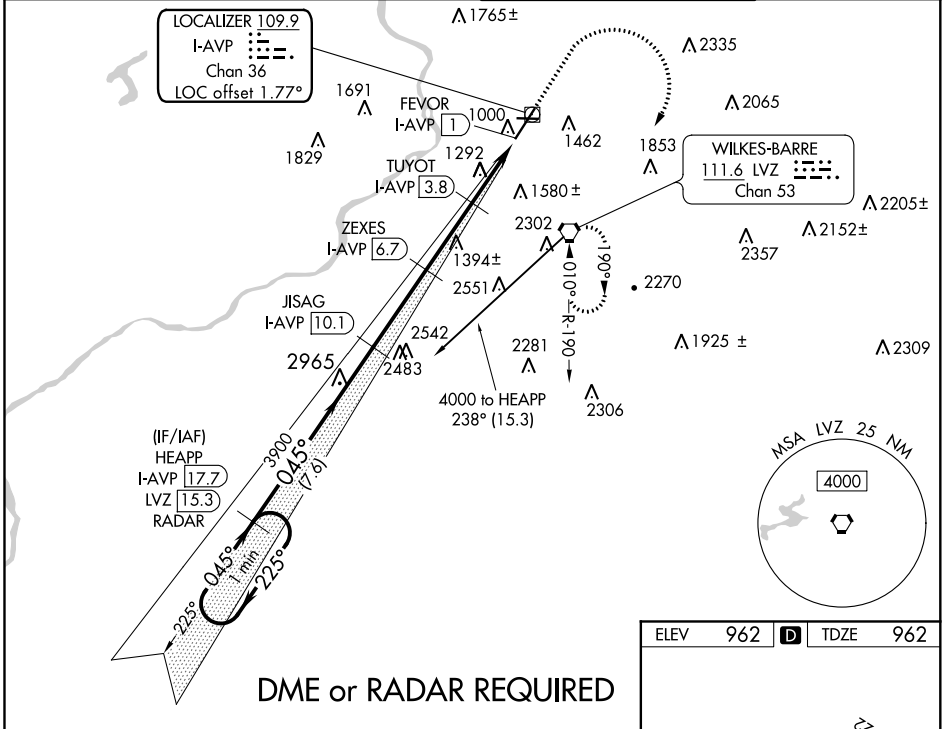
WILKES-BARRE/SCRANTON INTL (AVP)

⚠ Circling to Rwy 10, 28 NA at night. Circling NA for Cats C and D southeast of Rwy 4-22. Autopilot coupled approach NA below 2530. DME required. For inop ALS, increase S-ILS 4 all Cats visibility to RVR 5000, and S-LOC 4 Cat C/D visibility to 1½ SM.

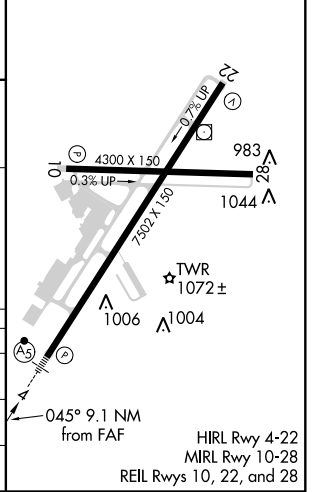
MALSR
AS

MISSED APPROACH:
Climb to 3000 then climbing right turn to 4000 direct LVZ VORTAC and hold.

ATIS 111.6	WILKES-BARRE APP CON 120.95 256.7 (280°-100°) 126.3 256.7 (101°-279°)	WILKES-BARRE TOWER 120.1 257.8	GND CON 121.9
----------------------	---	--	-------------------------



ELEV 962	D	TDZE 962
----------	----------	----------



One Minute Holding Pattern	HEAPP I-AVP 17.7	RADAR	3000	4000	LVZ
GS 3.00° TCH 56	3900	*2820	*1900	*LOC only	FEVOR I-AVP 1
CATEGORY	A	B	C	D	
S-ILS 4	1262/24		300 (300-1)		
S-LOC 4	1540/24	578 (600-1)	1540-1¼	578 (600-1¼)	
C CIRCLING	1840-1¼ 878 (900-1¼)	1980-1½ 1018 (1100-1½)	1980-3 1018 (1100-3)	2280-3 1318 (1400-3)	

NE-4, 30 DEC 2021 to 27 JAN 2022

NE-4, 30 DEC 2021 to 27 JAN 2022