

LOC I- OXR	APP CRS	Rwy Idg	5500
108.7	256°	TDZE	44
		Apt Elev	45

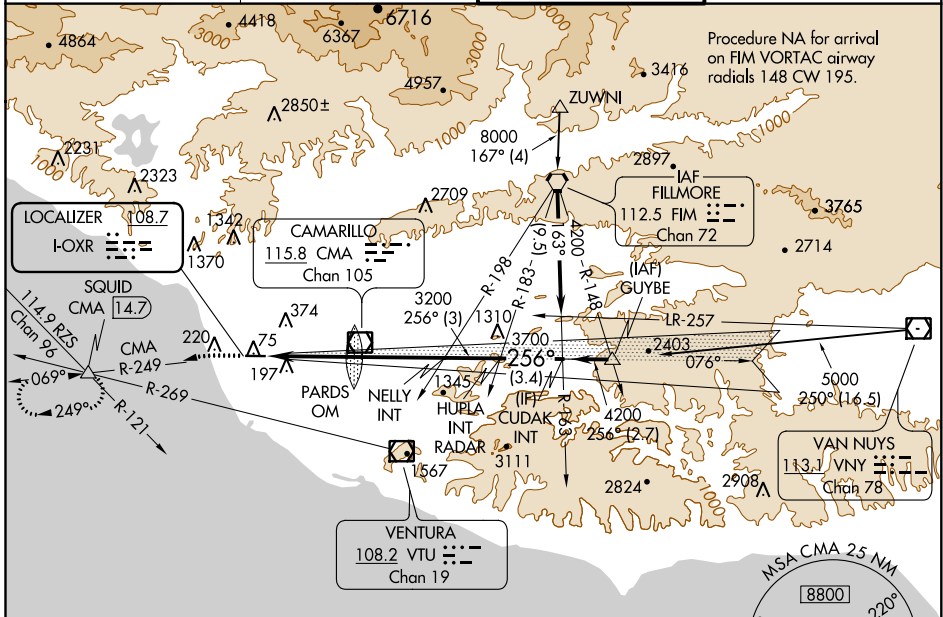
ILS or LOC RWY 25

OXNARD (OXR)

⚠ Rwy 25 helicopter visibility reduction below 3/4 SM NA. Autopilot coupled approach NA below 867. Inop table does not apply. When local altimeter setting not received, use Camarillo altimeter setting and increase S-ILS 25 DA to 312 and all MDA 20 feet, increase S-LOC 25 Cat C/D visibility 1/8 SM, and Circling Cat C visibility 1/4 SM.

MALSF
 MISSED APPROACH: Climb to 520 then climbing left turn to 2000 on CMA VOR/DME R-249 to SQUID INT/14.7 DME and hold.

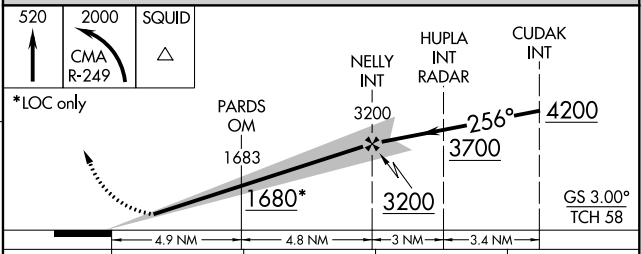
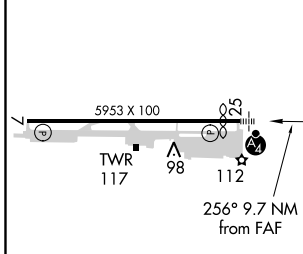
ATIS 118.05	POINT MUGU APP CON * 124.7 335.5	OXNARD TOWER * 134.95 (CTAF) 0 257.8	GND CON 121.9
-----------------------	--	--	-------------------------



SW-3, 30 DEC 2021 to 27 JAN 2022

SW-3, 30 DEC 2021 to 27 JAN 2022

ELEV 45	D	TDZE 44
---------	----------	---------



REIL Rwy 7	MIRL Rwy 7-25
FAF to MAP 9.7 NM	
Knots	60 90 120 150 180
Min:Sec	9:42 6:28 4:51 3:53 3:14
CATEGORY	A B C D
S-ILS 25	294-1 250 (300-1)
S-LOC 25	580-1 536 (600-1) 580-1½ 536 (600-1½)
CIRCLING	580-1 535 (600-1) 700-1¾ 655 (700-1¾) 760-2¼ 715 (800-2¼)