

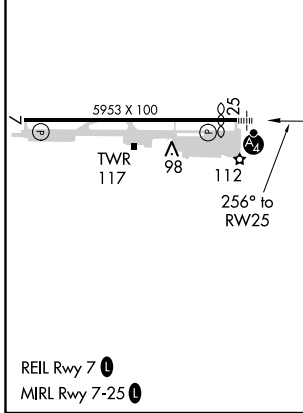
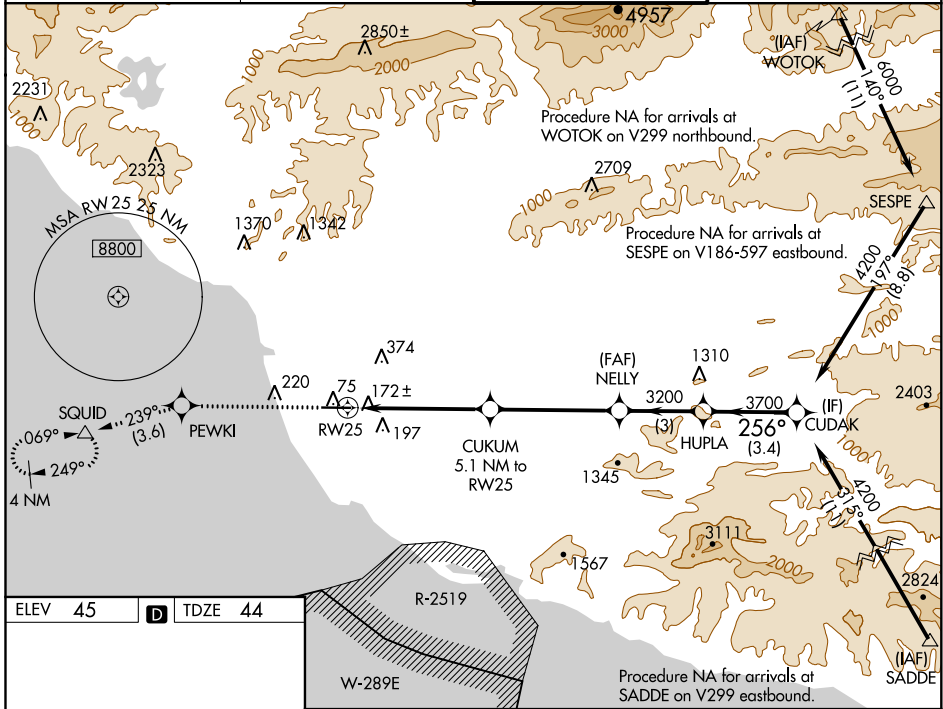
WAAS CH 86299 W25A	APP CRS 256°	Rwy Idg 5500 TDZE 44 Apt Elev 45
--	------------------------	---

RNAV (GPS) RWY 25

OXNARD (OXR)

<p>RNP APCH-GPS.</p> <p>⚠ Inoperative table does not apply. Baro-VNAV NA when using Camarillo altimeter setting. For uncompensated Baro-VNAV systems, LNAV/VNAV NA below -15°C or above 43°C. When local altimeter setting not received, use Camarillo altimeter setting and increase LPV DA to 312 feet, increase LNAV/VNAV DA to 351 feet; increase all MDAs 20 feet and Circling Cat C visibility ¼ SM.</p>		<p>MALSF</p>	<p>MISSED APPROACH: Climb to 2000 direct PEWKI and on track 239° to SQUID and hold.</p>
---	--	--------------	---

<p>ATIS 118.05</p>	<p>POINT MUGU APP CON* 124.7 335.5</p>	<p>OXNARD TOWER* 134.95 (CTAF) 0 257.8</p>	<p>GND CON 121.9</p>
-------------------------------	---	---	---------------------------------



2000	PEWKI	tr 239°	SQUID	NELLY	HUPLA	CUDAK
			CUKUM 5.1 NM to RW25	3200	3700	4200
			1720*	3200	3700	GP 3.00° TCH 58
			5.1 NM	4.6 NM	3 NM	3.4 NM

CATEGORY	A	B	C	D
LPV DA	294-1 250 (300-1)			
LNAV/VNAV DA	333-1 289 (300-1)			
LNAV MDA	520-1	476 (500-1)	520-1 ³ / ₈	476 (500-1 ³ / ₈)
CIRCLING	520-1	475 (500-1)	700-1 ³ / ₄ 655 (700-1 ³ / ₄)	760-2 ¹ / ₄ 715 (800-2 ¹ / ₄)

SW-3, 30 DEC 2021 to 27 JAN 2022

SW-3, 30 DEC 2021 to 27 JAN 2022