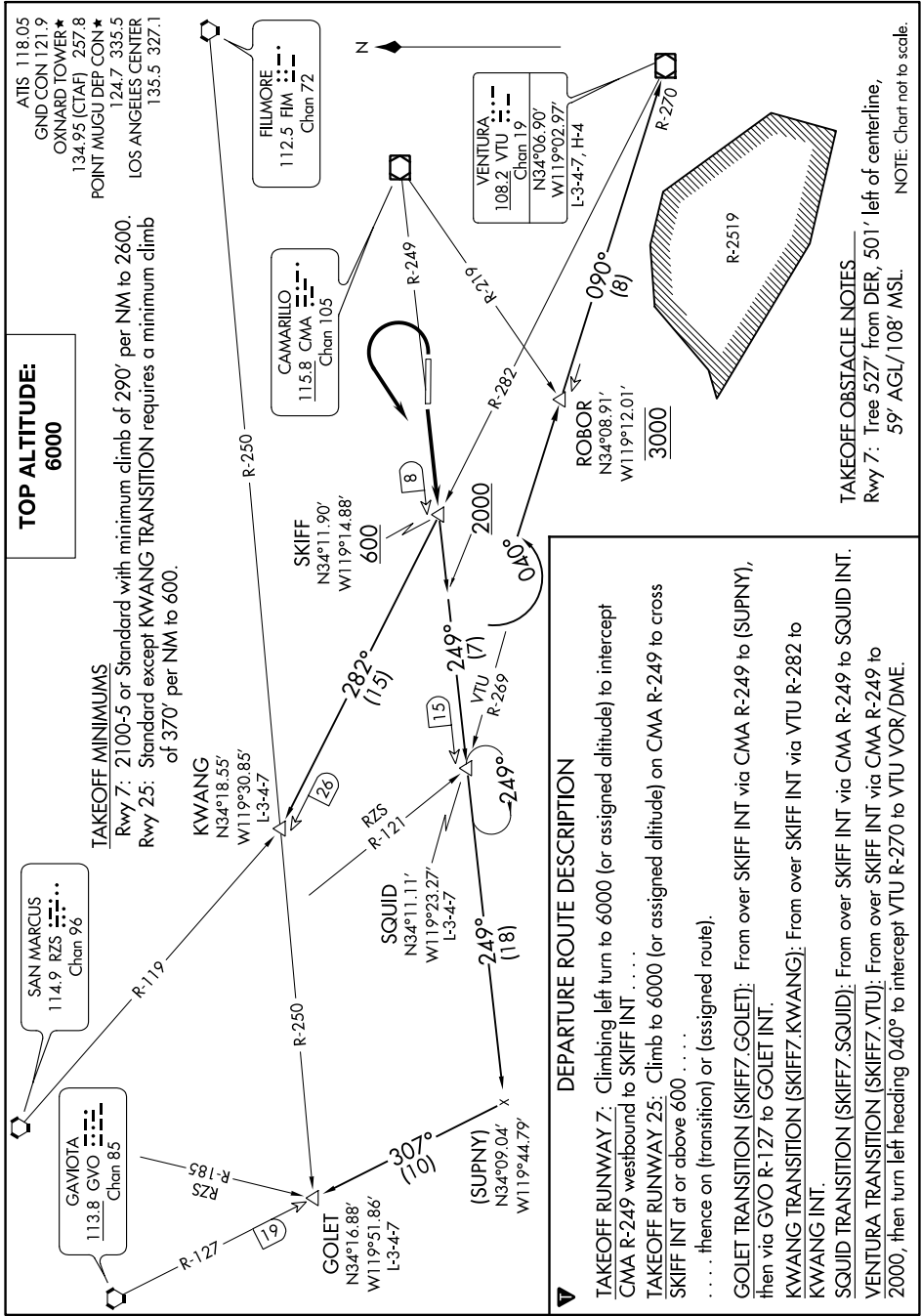


SKIFF SEVEN DEPARTURE

SL-674 (FAA)

OXNARD (OXR)
OXNARD, CALIFORNIA

SW-3, 30 DEC 2021 to 27 JAN 2022



SKIFF SEVEN DEPARTURE

OXNARD, CALIFORNIA
OXNARD (OXR)

SW-3, 30 DEC 2021 to 27 JAN 2022

TOP ALTITUDE:
6000

TAKEOFF MINIMUMS
Rwy 7: 2100-5 or Standard with minimum climb of 290' per NM to 2600.
Rwy 25: Standard except KWANG TRANSITION requires a minimum climb of 370' per NM to 600.

DEPARTURE ROUTE DESCRIPTION

TAKEOFF RUNWAY 7: Climbing left turn to 6000 (or assigned altitude) to intercept CMA R-249 westbound to SKIFF INT

TAKEOFF RUNWAY 25: Climb to 6000 (or assigned altitude) on CMA R-249 to cross SKIFF INT at or above 600

. thence on (transition) or (assigned route).

GOLET TRANSITION (SKIFF7.GOLET): From over SKIFF INT via CMA R-249 to (SUPNY), then via GVO R-127 to GOLET INT.

KWANG TRANSITION (SKIFF7.KWANG): From over SKIFF INT via VTU R-282 to KWANG INT.

SQUID TRANSITION (SKIFF7.SQUID): From over SKIFF INT via CMA R-249 to SQUID INT.

VENTURA TRANSITION (SKIFF7.VTU): From over SKIFF INT via CMA R-249 to 2000, then turn left heading 040° to intercept VTU R-270 to VTU VOR/DME.

TAKEOFF OBSTACLE NOTES
Rwy 7: Tree 527' from DER, 501' left of centerline, 59' AGL/108' MSL.

NOTE: Chart not to scale.