

VOR/DME CMA 115.8 Chan 105	APP CRS 247°	Rwy Idg TDZE Apt Elev	5500 44 45
---	------------------------	-----------------------------	---------------------------------------

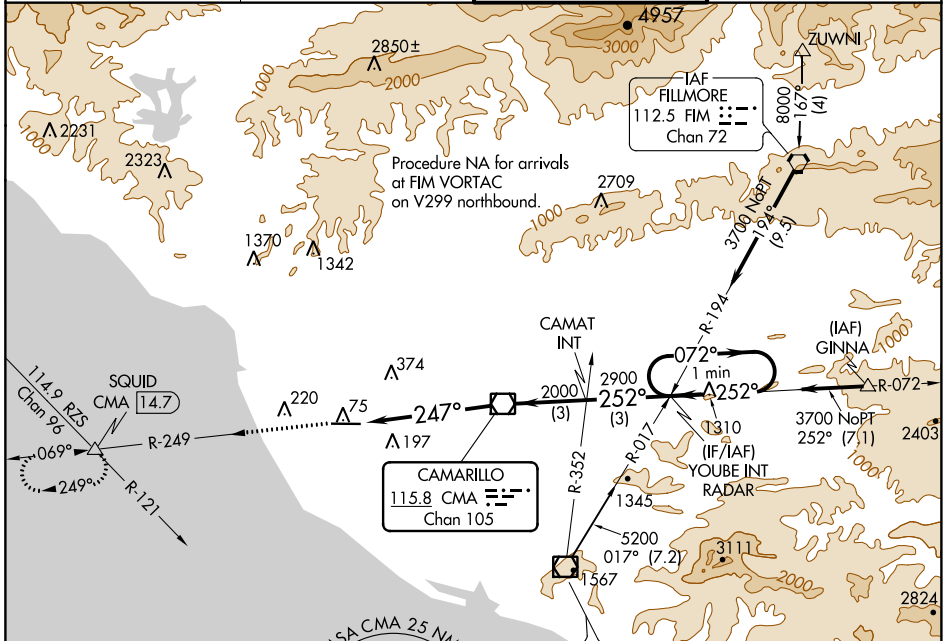
VOR RWY 25

OXNARD (OXR)

⚠ Inop table does not apply. When local altimeter setting not received, use Camarillo altimeter setting and increase all MDAs 20 feet, increase Circling Cat C visibility ¼ SM. Rwy 25 helicopter visibility reduction below ¾ SM NA.

MALSF MISSED APPROACH: Climb to 2000 on CMA R-249 to SQUID INT/14.7 DME and hold.

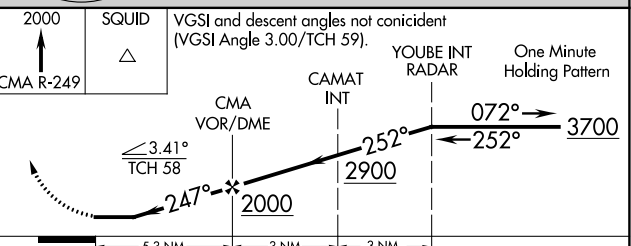
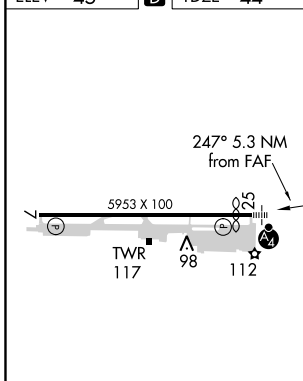
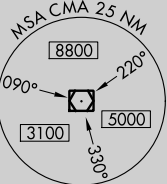
ATIS 118.05	POINT MUGU APP CON* 124.7 335.5	OXNARD TOWER* 134.95 (CTAF) 257.8	GND CON 121.9
-----------------------	---	---	-------------------------



SW-3, 30 DEC 2021 to 27 JAN 2022

SW-3, 30 DEC 2021 to 27 JAN 2022

ELEV 45	D	TDZE 44
---------	----------	---------



REIL Rwy 7

MIRL Rwy 7-25

FAF to MAP 5.3 NM

Knots	60	90	120	150	180
Min:Sec	5:18	3:32	2:39	2:07	1:46

CATEGORY	A	B	C	D
S-25	540-1	496 (500-1)	540-1 ³ / ₈	496 (500-1 ³ / ₈)
CIRCLING	540-1	495 (500-1)	700-1 ³ / ₄ 655 (700-1 ³ / ₄)	760-2 ¹ / ₄ 715 (800-2 ¹ / ₄)