

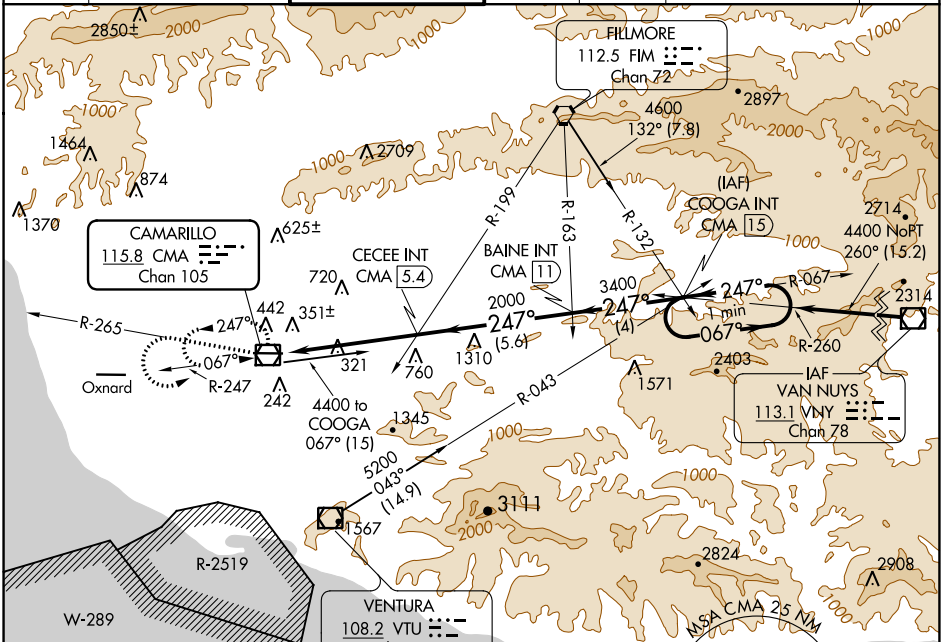
VOR/DME CMA <b>115.8</b> Chan <b>105</b>	APP CRS <b>247°</b>	Rwy Idg TDZE Apt Elev	<b>6013</b> <b>77</b> <b>77</b>
--	------------------------	-----------------------------	---------------------------------------

# VOR RWY 26

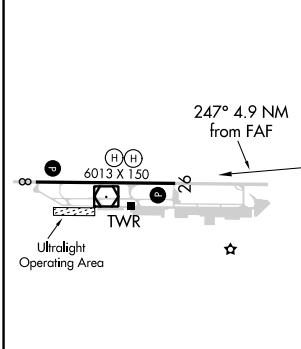
CAMARILLO (CMA)

**⚠** Circling not authorized north of Rwy 8/26. **⚠** MISSED APPROACH: Climb to 2000 via CMA R-265 then climbing left turn to 4400 direct CMA VOR/DME and hold.

ATIS <b>126.025</b>	POINT MUGU APP CON * <b>124.7 335.5</b>	CAMARILLO TOWER * <b>128.2 (CTAF) 0 269.4</b>	GND CON <b>121.8</b>	CLNC DEL <b>121.8</b>	POINT MUGU CLNC DEL <b>120.75 279.55</b>	UNICOM <b>122.95</b>
------------------------	--	--	-------------------------	--------------------------	---	-------------------------

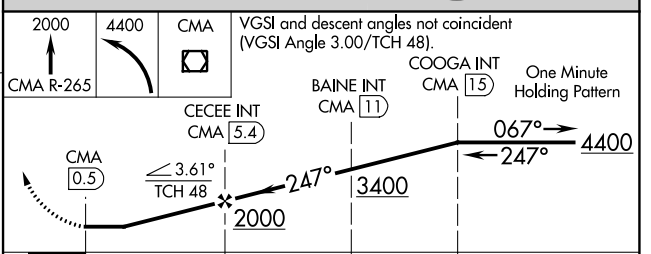


ELEV 77	TDZE 77
---------	---------



MIRL Rwy 8-26 **Ⓛ**  
REIL Rwy 8 and 26 **Ⓛ**  
FAF to MAP 4.9 NM

Knots	60	90	120	150	180
Min:Sec	4:54	3:16	2:27	1:58	1:38



CATEGORY	A	B	C	D
S-26	1100-1¼ 1023 (1100-1¼)	1100-1½ 1023 (1100-1½)	1100-3 1023 (1100-3)	NA
<b>Ⓛ</b> CIRCLING	1100-1¼ 1023 (1100-1¼)	1100-1½ 1023 (1100-1½)	1100-3 1023 (1100-3)	NA

SW-3, 30 DEC 2021 to 27 JAN 2022

SW-3, 30 DEC 2021 to 27 JAN 2022