

WAAS CH 42632 W35A	APP CRS 352°	Rwy Idg TDZE Apt Elev	4809 3641 3649
--	------------------------	-----------------------------	---

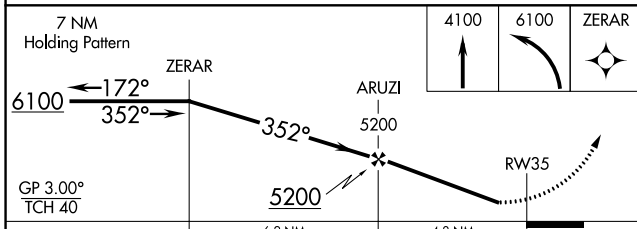
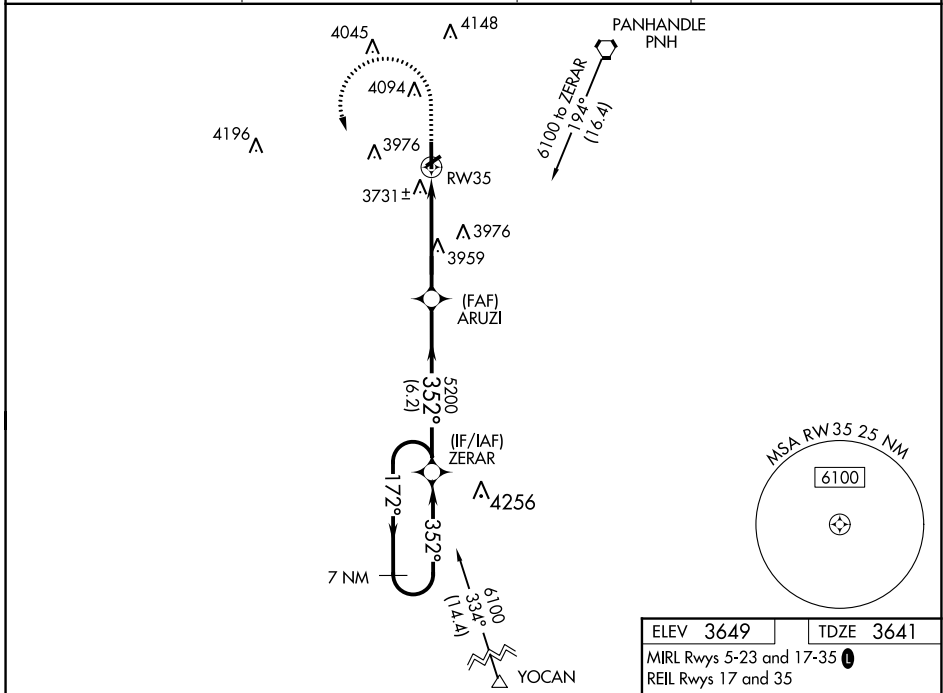
RNAV (GPS) RWY 35

TRADEWIND (TDW)

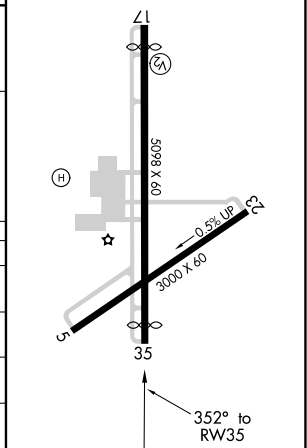
Baro-VNAV NA. Use Rick Husband Amarillo Intl altimeter setting; when not received, use Hereford altimeter setting; increase LPV DA to 3983 feet, LNAV/VNAV DA to 4108 feet, and all MDAs 80 feet, and increase LNAV/VNAV all Cats and Circling Cat B visibility $\frac{1}{4}$ SM. Procedure NA at night. DME/DME RNP-0.3 NA. Helicopter visibility reduction below 1 SM NA.

MISSED APPROACH: Climb to 4100 then climbing left turn to 6100 direct ZERAR and hold.

AWOS-AV 118.475	AMARILLO APP CON * 119.5 307.0	CLNC DEL 125.4	UNICOM 122.8 (CTAF) 0
---------------------------	--	--------------------------	---------------------------------



ELEV 3649	TDZE 3641
MIRL Rwy 5-23 and 17-35 0	
REIL Rwy 17 and 35	



CATEGORY	A	B	C	D
LPV DA	3913-1	272 (300-1)		NA
LNAV/VNAV DA	4038-1 $\frac{1}{8}$	397 (400-1 $\frac{1}{8}$)		NA
LNAV MDA	4300-1	659 (700-1)		NA
CIRCLING	4300-1 651 (700-1)	4420-1 771 (800-1)		NA

SC-2, 30 DEC 2021 to 27 JAN 2022

SC-2, 30 DEC 2021 to 27 JAN 2022