

WAAS CH <b>58333</b> <b>W18A</b>	APP CRS <b>184°</b>	Rwy Idg <b>8002</b> TDZE <b>794</b> Apt Elev <b>808</b>
--	------------------------	---

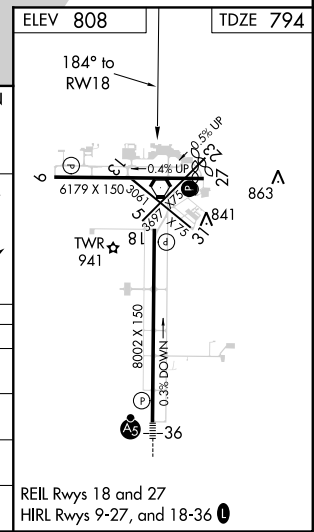
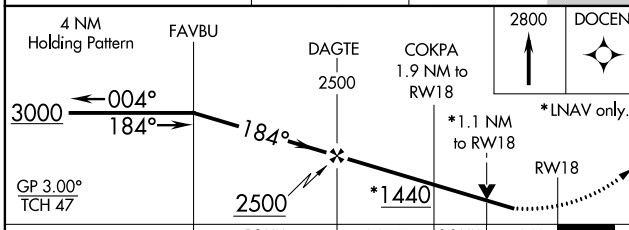
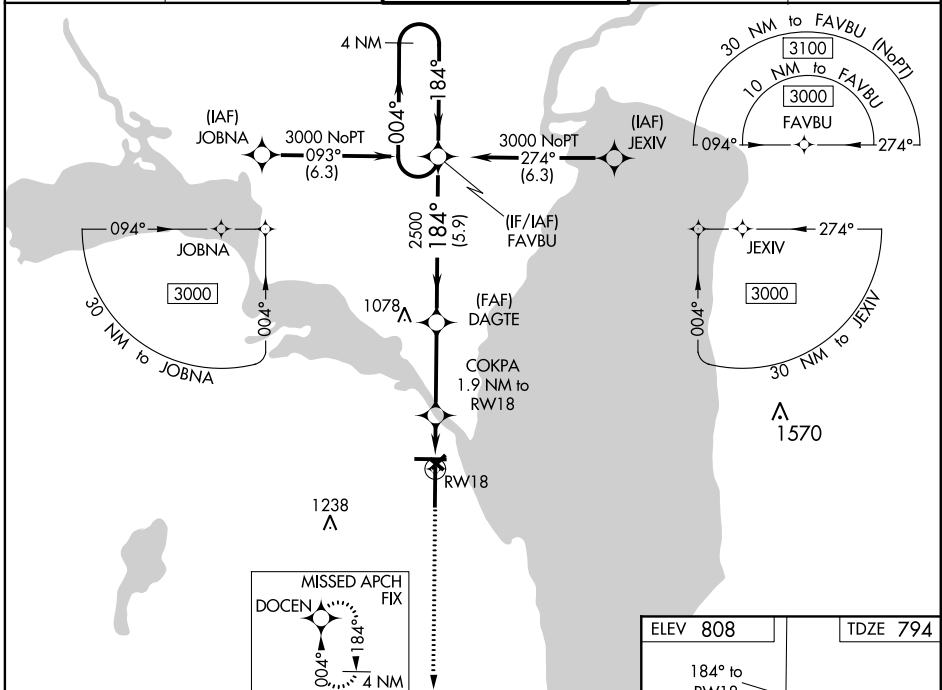
# RNAV (GPS) RWY 18

WITTMAN RGNL (OSH)

**⚠** For uncompensated Baro-VNAV systems, LNAV/VNAV NA below -20°C (-4°F) or above 54°C (130°F). VDP and Baro-VNAV NA when using Fond Du Lac altimeter setting. When local altimeter setting not received, use Fond Du Lac altimeter setting and increase all DA 31 feet and all MDA 40 feet; increase LPV and LNAV/VNAV all Cats visibility 1/8 mile, increase LNAV Cat C/D and Circling Cat D visibility 1/4 mile. Helicopter visibility reduction below 3/4 SM NA. Circling to Rwy 5, 23 and 31 NA at night. DME/DME RNP-0.3 NA.

**MISSED APPROACH:**  
Climb to 2800 direct  
DOCEN and hold.

ATIS <b>125.9</b>	MILWAUKEE APP CON <b>127.0 263.075</b>	<b>OSHKOSH TOWER ★</b> <b>118.5 (CTAF) 290.9</b>	GND CON <b>132.3</b>	UNICOM <b>122.95</b>
----------------------	---	---	-------------------------	-------------------------



CATEGORY	A	B	C	D
LPV DA		1044-3/4	250 (300-3/4)	
LNAV/ VNAV DA		1122-1 1/8	328 (400-1 1/8)	
LNAV MDA	1200-1	406 (400-1)	1200-1 1/8	406 (400-1 1/8)
<b>C</b> CIRCLING	1280-1 472 (500-1)	1300-1 492 (500-1)	1360-1 1/2 552 (600-1 1/2)	1440-2 632 (700-2)

EC-3, 30 DEC 2021 to 27 JAN 2022

EC-3, 30 DEC 2021 to 27 JAN 2022