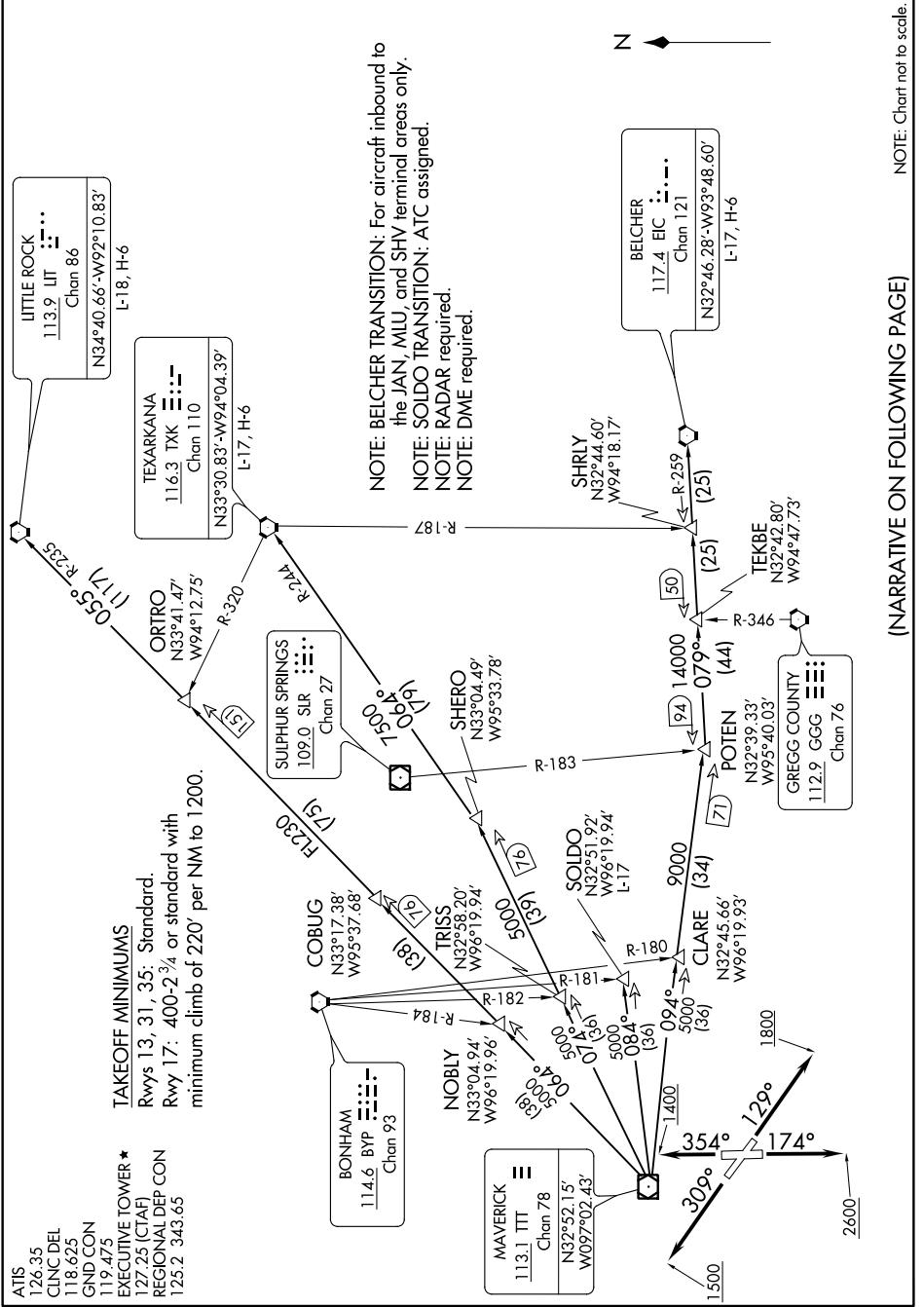


DALLAS EIGHT DEPARTURE

SC-2, 30 DEC 2021 to 27 JAN 2022



TAKEOFF MINIMUMS
 Rwys 13, 31, 35: Standard.
 Rwy 17: 400-2³/₄ or standard with
 minimum climb of 220' per NM to 1200.

EXECUTIVE TOWER *
 127.25 (CTAF)
REGIONAL DEP CON
 125.2 343.65

ATIS
 126.35
 CLNC DEL
 118.625
 GND CON
 119.475

(NARRATIVE ON FOLLOWING PAGE)

NOTE: Chart not to scale.

SC-2, 30 DEC 2021 to 27 JAN 2022