

JOE POOL THREE DEPARTURE

ATIS
126.35
CLNC DEL
118.625
GND CON
119.475
EXECUTIVE TOWER ★
127.25 (CTAF)
REGIONAL DEP CON
125.2 343.65

TAKEOFF MINIMUMS

Rwys 13, 31, 35: Standard.
Rwy 17: 400-2¾ or standard with minimum climb of 220' per NM to 1200.

MAVERICK
113.1 TTT
Chan 78
N32°52.15'
W97°02.43'

WACO
115.3 ACT
Chan 100
N31°39.73'
W97°16.14'
L-19, H-6

HOARY
N30°34.63'
W97°46.52'
L-19-21, H-7

CENTEX
112.8 CWK
Chan 75

SAN ANTONIO
116.8 SAT
Chan 115
N29°38.64'-W98°27.68'
L-19, H-7

NELYN
N32°17.10'
W97°11.15'

JASPA
N32°17.10'
W97°03.54'
L-17

ARDIA
N32°17.10'
W96°56.27'
L-17

BRDEN
N31°53.19'
W96°39.35'

ELLVR
N31°42.49'
W96°50.27'
L-19, H-6

WINDU
N31°31.83'
W97°04.95'
L-19, H-6

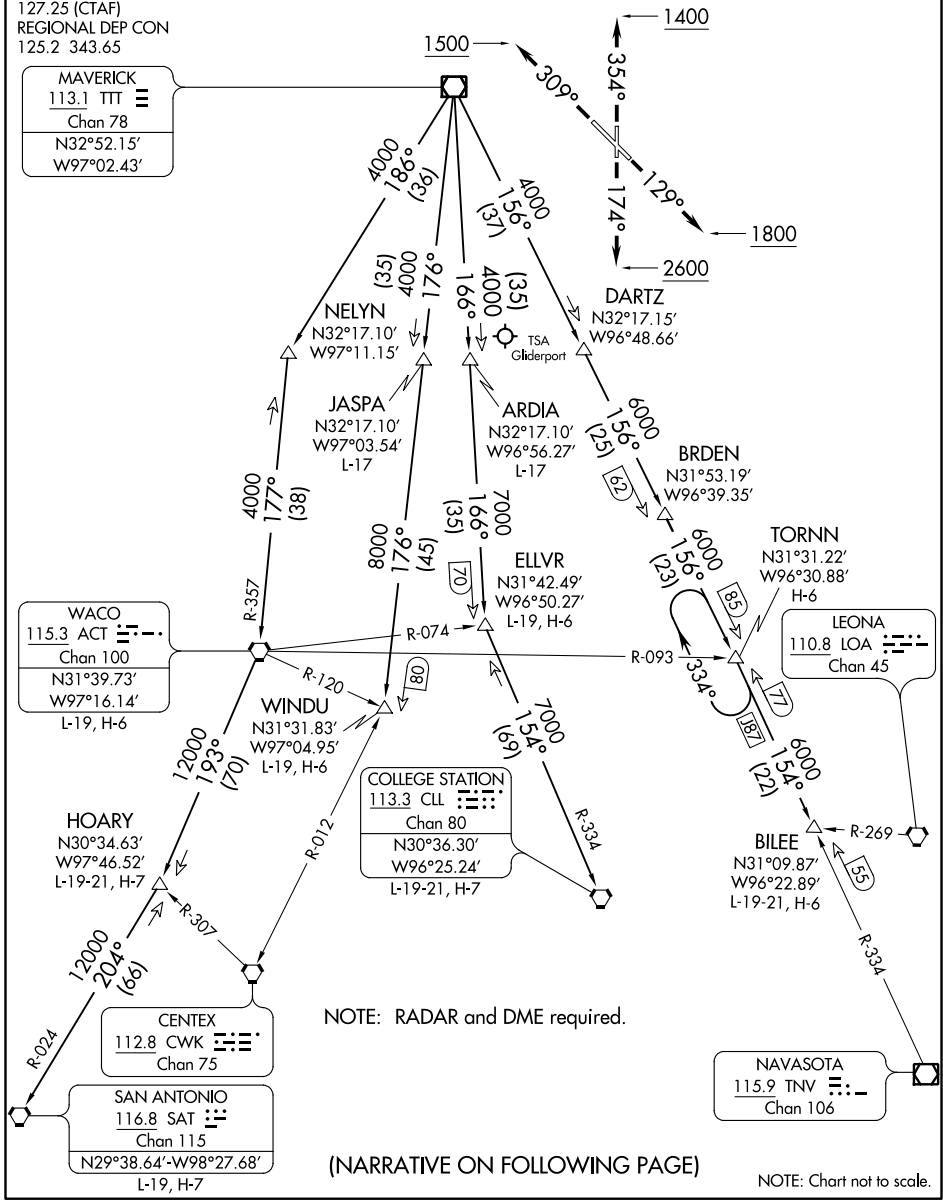
COLLEGE STATION
113.3 CLL
Chan 80
N30°36.30'
W96°25.24'
L-19-21, H-7

TORNNT
N31°31.22'
W96°30.88'
H-6

LEONA
110.8 LOA
Chan 45

BILEE
N31°09.87'
W96°22.89'
L-19-21, H-6

NAVASOTA
115.9 TNV
Chan 106



NOTE: RADAR and DME required.

(NARRATIVE ON FOLLOWING PAGE)

NOTE: Chart not to scale.

SC-2, 30 DEC 2021 to 27 JAN 2022

SC-2, 30 DEC 2021 to 27 JAN 2022

JOE POOL THREE DEPARTURE