

KUSSO EIGHT DEPARTURE (RNAV)

SC-2, 30 DEC 2021 to 27 JAN 2022

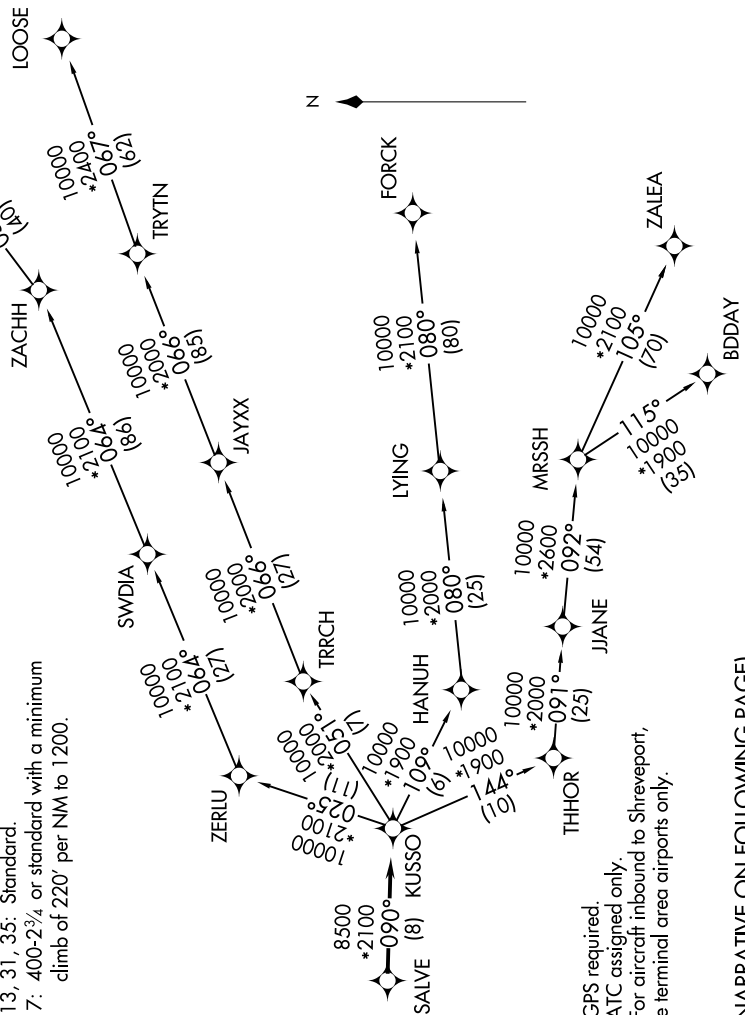
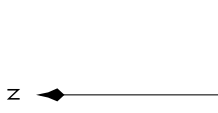
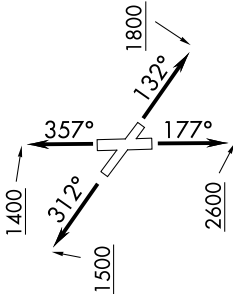
TOP ALTITUDE: ASSIGNED BY ATC

ATIS 126.35
 CLINC DEL 118.625
 GND CON 119.475
 EXECUTIVE TOWER * 127.25 (CTAF)
 REGIONAL DEP CON 125.2343.65

TAKEOFF MINIMUMS

Rwys 13, 31, 35: Standard.

Rwy 17: 400-2³/₄ or standard with a minimum climb of 220' per NM to 1200.



NOTE: RADAR required.
 NOTE: RNAV 1.
 NOTE: DME/DME/IRU or GPS required.
 NOTE: BDDAY transition: ATC assigned only.
 NOTE: MRSSH transition: For aircraft inbound to Shreveport, Jackson and Monroe terminal area airports only.

(NARRATIVE ON FOLLOWING PAGE)

NOTE: Chart not to scale.

SC-2, 30 DEC 2021 to 27 JAN 2022