

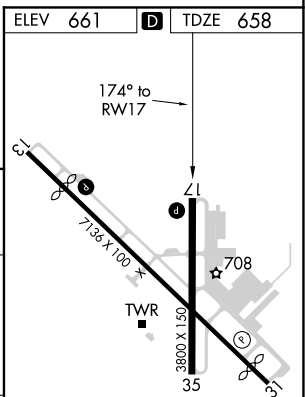
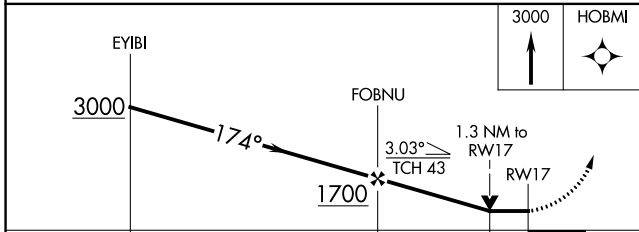
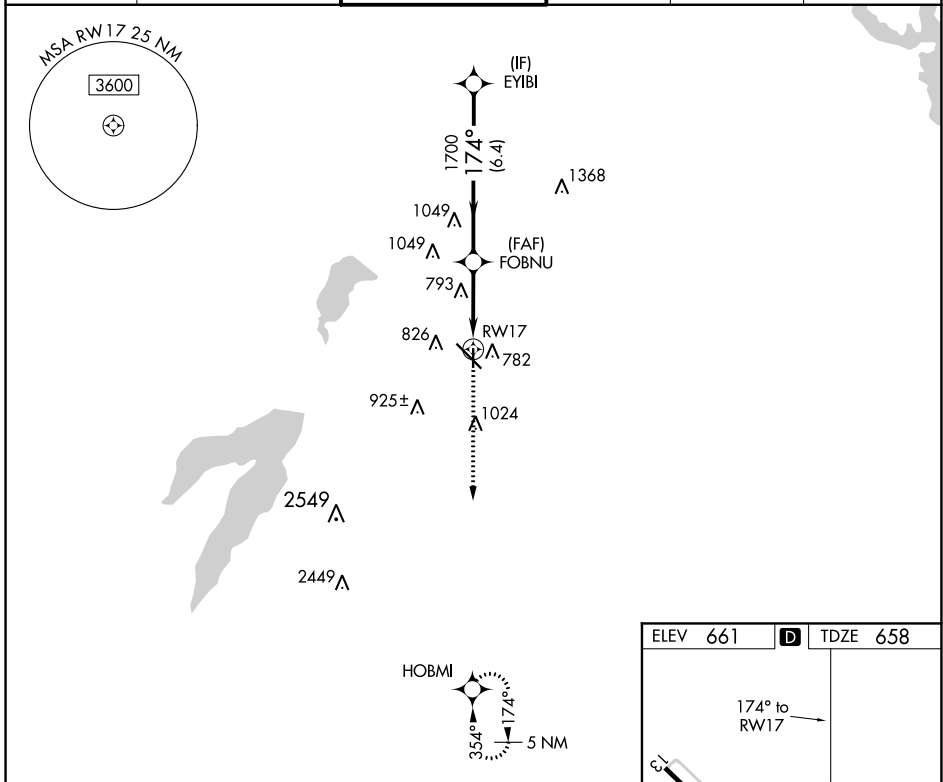
APP CRS 174°	Rwy Idg 3800 TDZE 658 Apt Elev 661
------------------------	---

RNAV (GPS) RWY 17

DALLAS EXEC (RBD)

RNP APCH.	MISSED APPROACH: Climb to 3000 direct HOBMI and hold.
Rwy 17 helicopter visibility reduction below 3/4 SM NA.	

ATIS 126.35	REGIONAL APP CON 125.2 343.65	EXECUTIVE TOWER * 127.25 (CTAF)	GND CON 119.475	CLNC DEL 118.625	UNICOM 122.95
-----------------------	---	---	---------------------------	----------------------------	-------------------------



CATEGORY	A	B	C	D
LNVA MDA	1100-1	442 (500-1)	1100-1 ³ / ₈ 442 (500-1 ³ / ₈)	1100-1 ¹ / ₂ 442 (500-1 ¹ / ₂)
CIRCLING	1160-1 499 (500-1)	1220-1 559 (600-1)	1340-2 679 (700-2)	1400-2 ¹ / ₄ 739 (800-2 ¹ / ₄)

REIL Rwy 13, 17, 31 and 35
MIRL Rwy 13-31 and 17-35

SC-2, 30 DEC 2021 to 27 JAN 2022

SC-2, 30 DEC 2021 to 27 JAN 2022