


LOC/DME I-SVC 111.7 Chan 54	APP CRS 258°	Rwy Idg TDZE Apt Elev 6802 5380 5446
--	------------------------	--

LOC RWY 26
GRANT COUNTY (SVC)

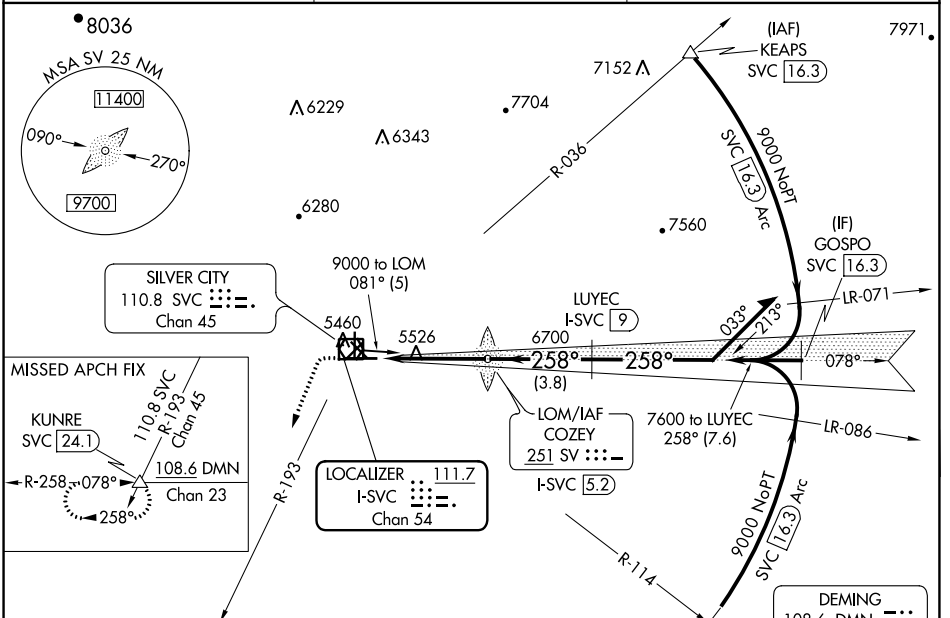
DME required.

NA Circling to Rwy 3, 12, 17, 21, 30, 35 NA at night.
When local altimeter setting not received, procedure NA.
For inop ALS, increase S-26 Cat C/D visibility to 1 3/8 SM.

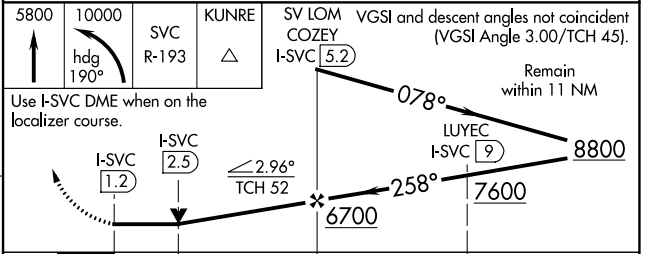
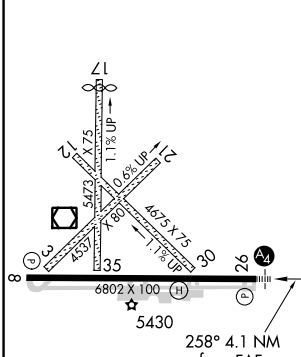
MALS 

MISSED APPROACH: Climb to 5800, then climbing left turn to 10000 on heading 190° and SVC VOR/DME R-193 to KUNRE INT/ SVC VOR/DME 24.1 DME and hold.

AWOS-3 126.725	ALBUQUERQUE CENTER 134.45 327.15	UNICOM 122.8 (CTAF) 0
--------------------------	--	---------------------------------



ELEV 5446	TDZE 5380
-----------	-----------



CATEGORY	A	B	C	D
S-26	5840-3/4	460 (400-3/4)	5840-1 460 (400-1)	5840-1 1/4 460 (400-1 1/4)
CIRCLING	5920-1 474 (500-1)	5940-1 494 (500-1)	5960-1 5/8 514 (600-1 5/8)	6020-2 574 (600-2)

SW-1, 30 DEC 2021 to 27 JAN 2022

SW-1, 30 DEC 2021 to 27 JAN 2022