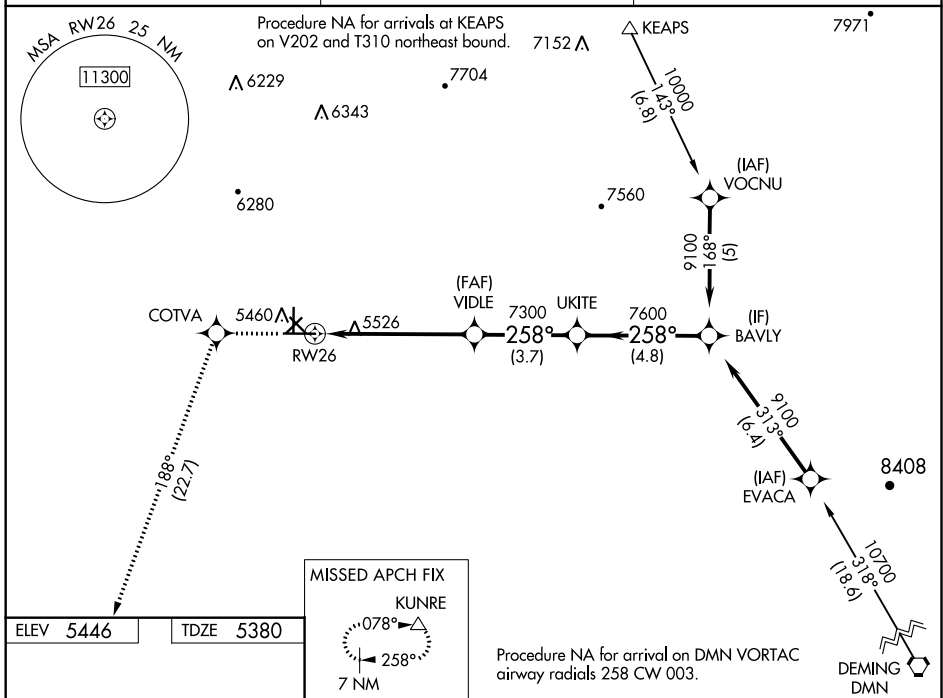


WAAS CH 87100 W26A	APP CRS 258°	Rwy Idg TDZE Apt Elev	6802 5380 5446
--	------------------------	-----------------------------	---

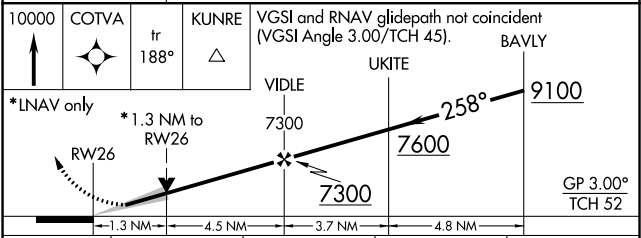
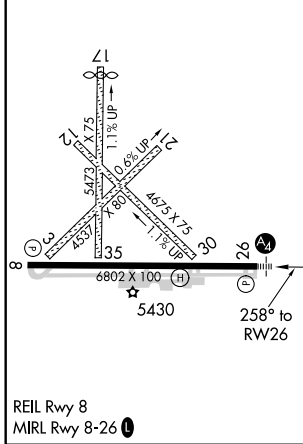
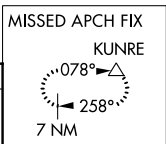
RNAV (GPS) RWY 26

GRANT COUNTY (SVC)

RNP APCH. <p>Circling to Rwy 3, 12, 17, 21, 30, 35 NA at night. Inop table does not apply to LPV. For uncompensated Baro-VNAV systems, LNAV/VNAV NA below -25°C or above 38°C. For inop ALS, increase LNAV Cat C/D visibility to 1 1/2 SM. When local altimeter setting not received, procedure NA.</p>	MALS 	MISSED APPROACH: Climb to 10000 direct COTVA and on track 188° to KUNRE and hold.
AWOS-3 126.725	ALBUQUERQUE CENTER 134.45 327.15	UNICOM 122.8 (CTAF)



ELEV 5446	TDZE 5380
------------------	------------------



CATEGORY	A	B	C	D
LPV DA		5630-3/4	250 (200-3/4)	
LNAV/VNAV DA		5789-1 1/2	409 (400-1 1/2)	
LNAV MDA	5840-3/4	460 (400-3/4)	5840-1	5840-1 1/4
CIRCLING	5880-1	5900-1	5940-1 1/2	6000-2
	434 (500-1)	454 (500-1)	494 (500-1 1/2)	554 (600-2)

SW-1, 30 DEC 2021 to 27 JAN 2022

SW-1, 30 DEC 2021 to 27 JAN 2022