

VOR/DME SVC 110.8 Chan 45	APP CRS 308°	Rwy Idg TDZE Apt Elev 5446	N/A N/A 5446
---	------------------------	--	---

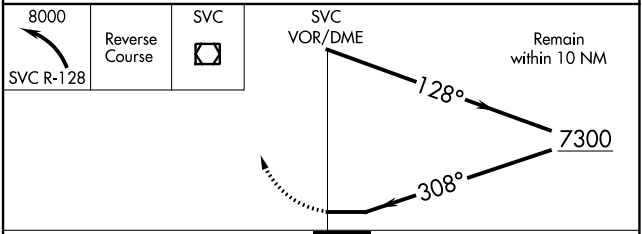
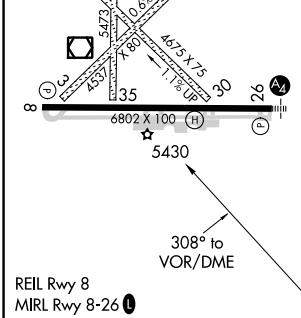
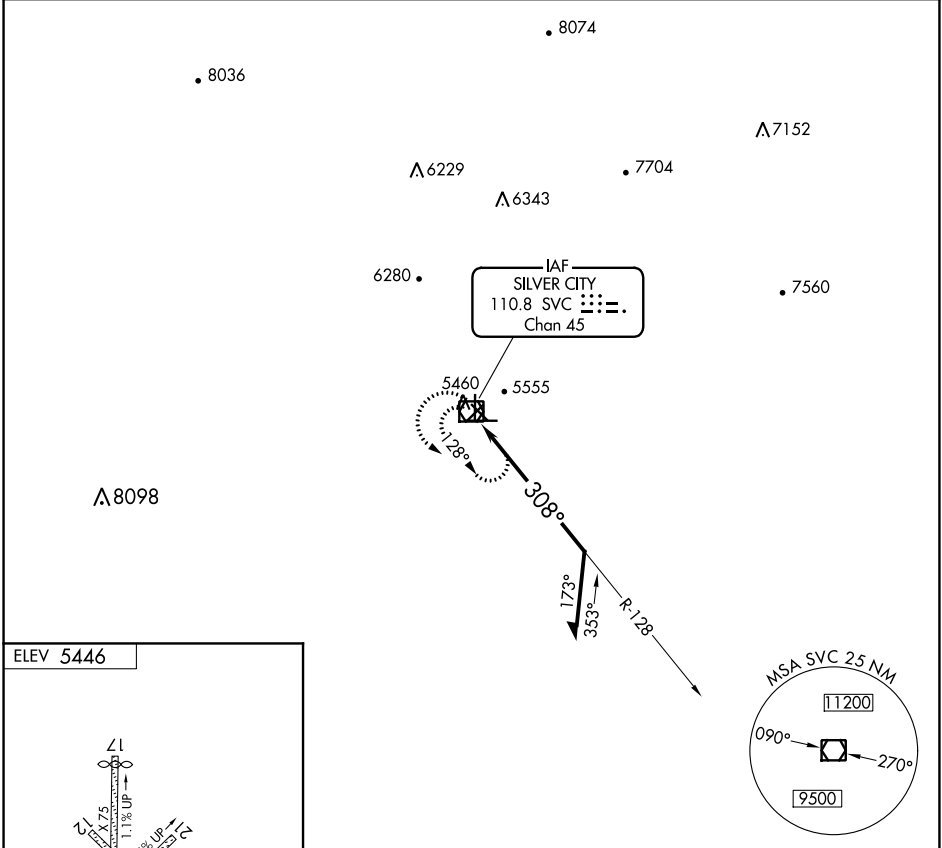
VOR-A

GRANT COUNTY (SVC)

▽ When local altimeter setting not received, procedure NA. Circling to Rwy 3, 12, 17, 21, 30, 35 NA at night.

▲ MISSED APPROACH: Climbing left turn to 8000 via SVC R-128, then reverse course to SVC VOR/DME and hold.

AWOS-3 126.725	ALBUQUERQUE CENTER 134.45 327.15	UNICOM 122.8 (CTAF) 0
--------------------------	--	--



CATEGORY	A	B	C	D
CIRCLING	5920-1 474 (500-1)	5940-1 494 (500-1)	5960-1½ 514 (600-1½)	6020-2 574 (600-2)

SW-1, 30 DEC 2021 to 27 JAN 2022

SW-1, 30 DEC 2021 to 27 JAN 2022