


| | | |
|--|------------------------|--|
| VOR/DME PUV 109.0 Chan 27 | APP CRS 027° | Rwy Idg TDZE Apt Elev 7100 2567 2567 |
|--|------------------------|--|

VOR RWY 5

PULLMAN/MOSCOW RGNL (PUW)

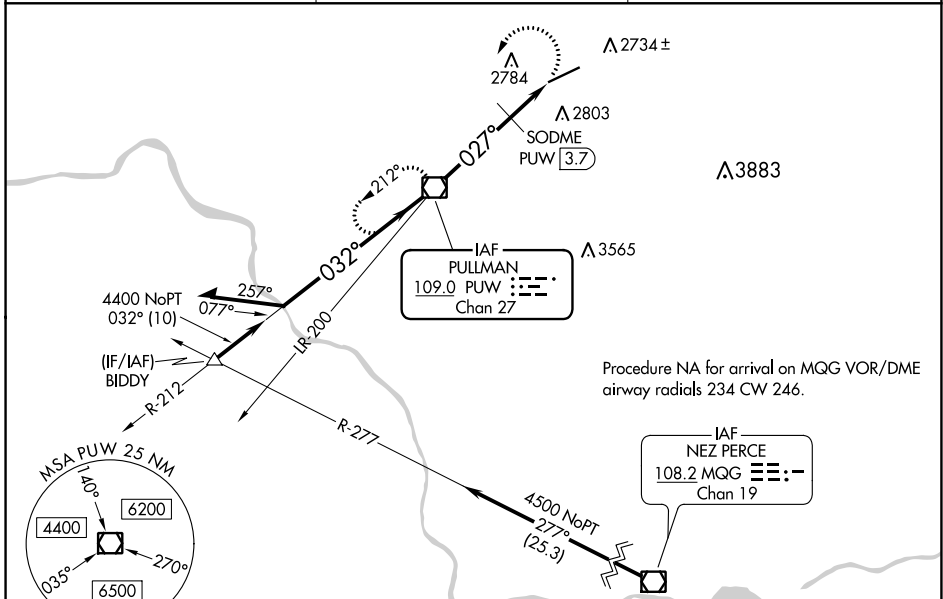
DME required.

▼ Procedure NA at night.
 ▲ Rwy 5 helicopter visibility reduction below 1 SM NA.
 Inop table does not apply to S-5 and SODME fix minimums Cats A/B.
 For inop ALS, increase S-5 SODME fix minimums Cat C/D visibility to 1 1/8 SM.

MALSR 

MISSED APPROACH: Climbing left turn to 6000 direct PUW VOR/DME and hold, continue climb-in-hold to 6000.

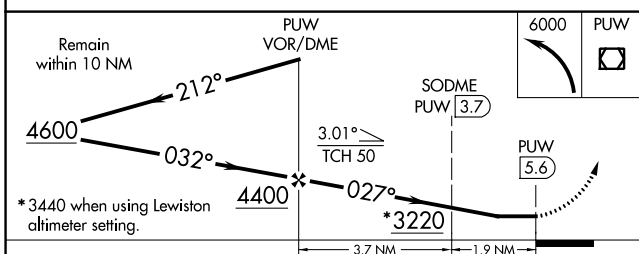
| | | |
|------------------------|--|---------------------------------|
| ASOS 135.675 | SEATTLE CENTER 123.95 290.55 | UNICOM 122.8 (CTAF) 0 |
|------------------------|--|---------------------------------|





NW-1, 30 DEC 2021 to 27 JAN 2022

NW-1, 30 DEC 2021 to 27 JAN 2022

| | | |
|-----------|---|-----------|
| ELEV 2567 | D | TDZE 2567 |
|-----------|---|-----------|



| CATEGORY | A | B | C | D |
|--|---------------------|-------------|-----------------|-----------------|
| S-5 | 3220/50 | 653 (700-1) | 3220-1 3/8 | 653 (700-1 1/8) |
|  CIRCLING | 3220-1 | 653 (700-1) | 3220-1 7/8 | 3420-2 3/4 |
| SODME FIX MINIMUMS | | | | |
| S-5 | 3040/50 473 (500-1) | | | |
|  CIRCLING | 3080-1 | 3120-1 | 3140-1 1/2 | 3420-2 3/4 |
| | 513 (600-1) | 553 (600-1) | 573 (600-1 1/2) | 853 (900-2 3/4) |

