


LOC I-BVO 111.3	APP CRS 176°	Rwy ldg 6201
		TDZE 694
		Apt Elev 717

LOC RWY 17

BARTLESVILLE MUNI (BVO)

⚠ When local altimeter setting not received, use Tulsa Intl altimeter setting and increase all MDA 100 feet, increase S-17 and Circling Cat C visibility ¼ mile. For inop MALS, increase S-17 Cat A/B visibility to 1 mile and Cat C to 1 ¼ mile. For inop MALS when using Tulsa Intl altimeter setting, increase S-17 Cat A/B visibility to 1 mile and Cat C to 2 mile. Circling NA east of Rwy 17-35. Helicopter visibility reduction below ¾ SM NA.

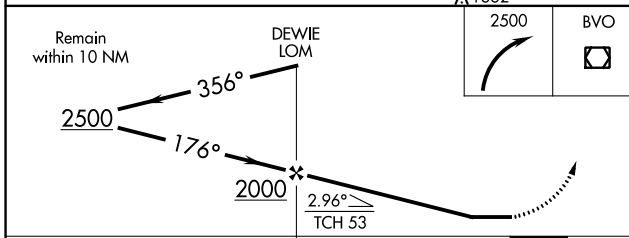
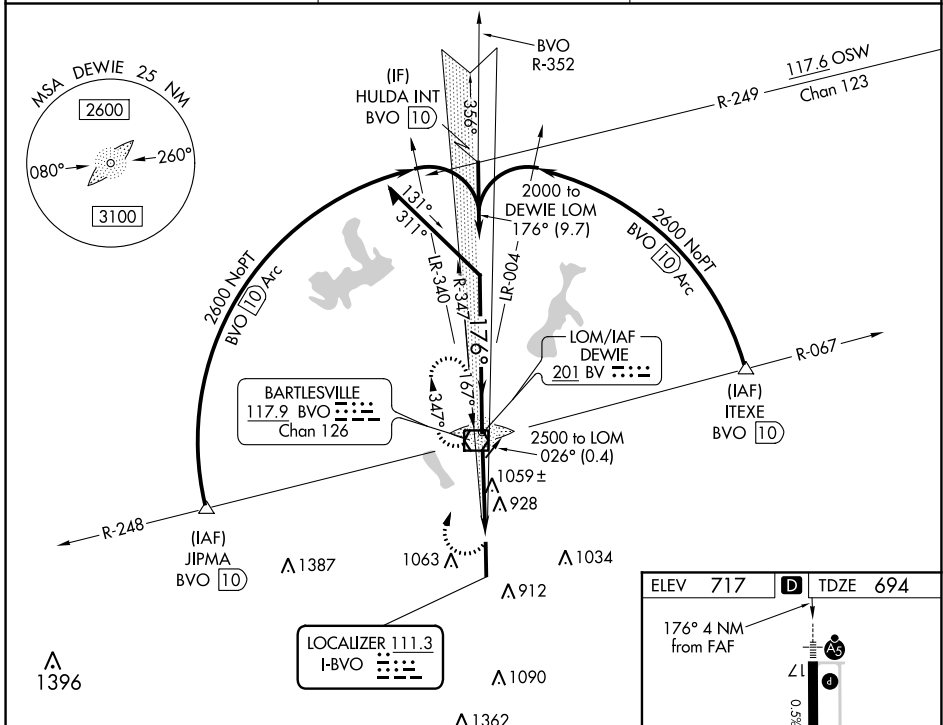
MALS



MISSED APPROACH: Climbing right turn to 2500 direct BVO VOR/DME and hold, continue climb-in-hold to 2500.

AWOS 132.675	KANSAS CITY CENTER 128.8 354.1
------------------------	--

UNICOM 122.825 (CTAF) 0



ELEV 717	D TDZE 694
----------	-------------------

176° 4 NM from FAF

0.58° UP

6850 X 100

MIRL Rwy 17-35 0 35 923

REIL Rwy 35 0 35

FAF to MAP 4 NM

Knots	60	90	120	150	180
Min:Sec	4:00	2:40	2:00	1:36	1:20

CATEGORY	A	B	C	D
S-17	1320-¾	626 (700-¾)	1320-1⅜ 626 (700-1⅜)	NA
C CIRCLING	1380-1	663 (700-1)	1400-2 683 (700-2)	NA

SC-1, 30 DEC 2021 to 27 JAN 2022

SC-1, 30 DEC 2021 to 27 JAN 2022